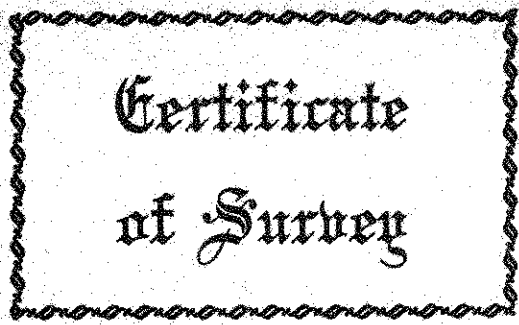


FROM THE OFFICE OF

CHARLES O. GEORGI COMPANY

2215 West County Road B Saint Paul, Minnesota 55113

REGISTERED CIVIL ENGINEER AND LAND SURVEYOR



I Hereby Certify that this plat shows a survey made by me of the property described on this plat, and that the corners are correctly placed as shown, and that all locations have been correctly shown.

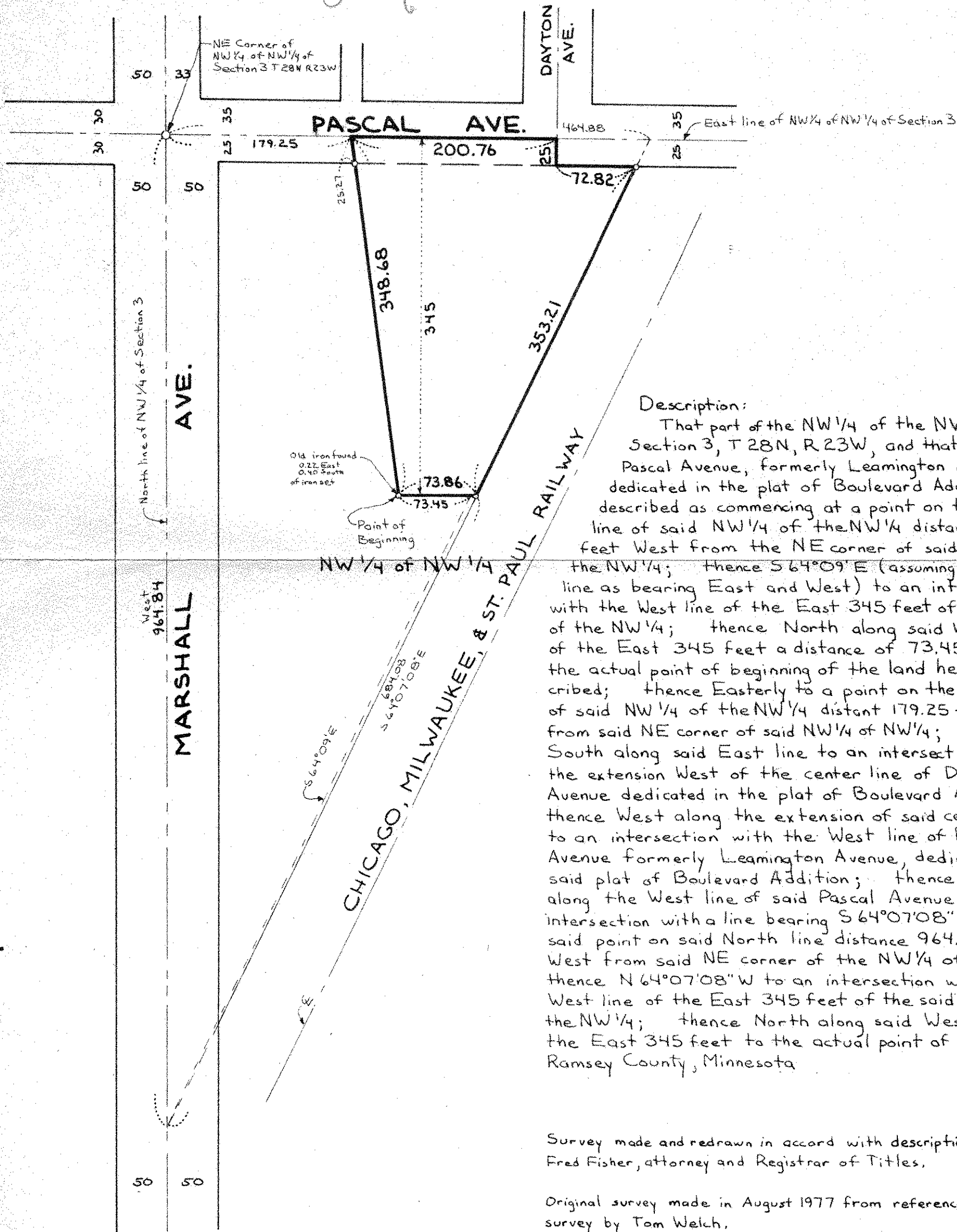
Surveyed For Geremia Lametti

Date October 1977

Scale 1"=100'

By Charles O. Georgi
REGISTERED LAND SURVEYOR

OCT 26 1977
6 TO FISHK



Description:
 That part of the NW 1/4 of the NW 1/4 of Section 3, T 28N, R 23W, and that part of Pascal Avenue, formerly Leamington Avenue, dedicated in the plat of Boulevard Addition, described as commencing at a point on the North line of said NW 1/4 of the NW 1/4 distant 964.84 feet West from the NE corner of said NW 1/4 of the NW 1/4; thence S 64° 09' E (assuming said North line as bearing East and West) to an intersection with the West line of the East 345 feet of said NW 1/4 of the NW 1/4; thence North along said West line of the East 345 feet a distance of 73.45 feet to the actual point of beginning of the land herein described; thence Easterly to a point on the East line of said NW 1/4 of the NW 1/4 distant 179.25 feet South from said NE corner of said NW 1/4 of NW 1/4; thence South along said East line to an intersection with the extension West of the center line of Dayton Avenue dedicated in the plat of Boulevard Addition; thence West along the extension of said center line to an intersection with the West line of Pascal Avenue formerly Leamington Avenue, dedicated in said plat of Boulevard Addition; thence South along the West line of said Pascal Avenue to an intersection with a line bearing S 64° 07' 08" E from said point on said North line distance 964.84 feet West from said NE corner of the NW 1/4 of the NW 1/4; thence N 64° 07' 08" W to an intersection with said West line of the East 345 feet of the said NW 1/4 of the NW 1/4; thence North along said West line of the East 345 feet to the actual point of beginning. Ramsey County, Minnesota

Survey made and redrawn in accord with description opinion of Fred Fisher, attorney and Registrar of Titles.

Original survey made in August 1977 from reference to 1969 survey by Tom Welch.



o Denotes iron pipe monument set