

THREE LOTS 40' X 120.68'
 N. E. COR. JUNO & FINN STS (PROPOSED)
 N. 1/2. N. 1/2. N.E. 1/4. S.E. 1/4.
 SEC. 8, TOWN 28 RANGE 23.

JOHN B. IRVINE SURVEYOR.
 JUNE 10-1911.

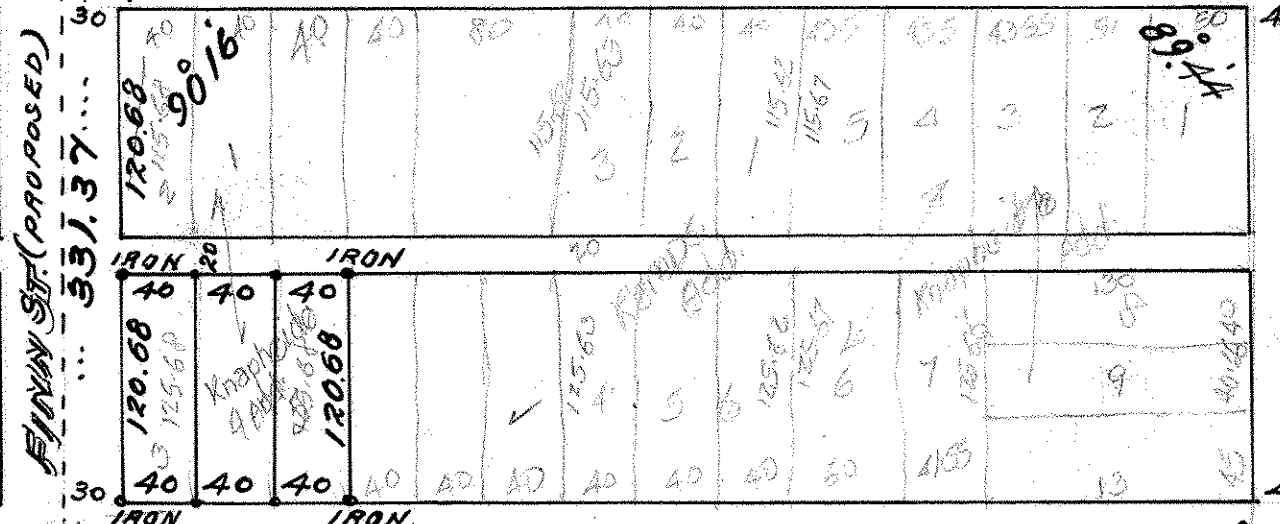
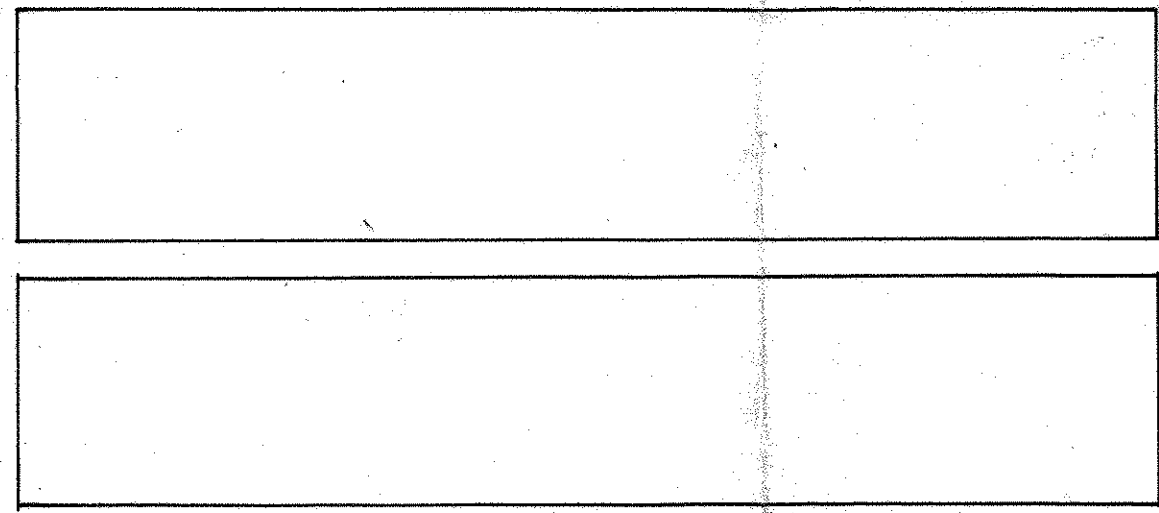
SCALE 1" = 100'

RANDOLPH ST.

1323.11

661.55

CORRECTION
 FINN (PROPOSED)
 331.42



FINN ST. (PROPOSED)
 331.37

Mont N.E.
 Cor. N.E. 1/4
 S.E. 1/4
 SEC. 8
 T. 28.
 R. 23

CLEVELAND BL.
 331.32

1323.09

661.54
 JUNO ST. (PROPOSED)

