

SE 5 28 23

FROM THE OFFICE OF

CHARLES O. GEORGI COMPANY

2215 West County Road B

Saint Paul, Minnesota 55113

REGISTERED CIVIL ENGINEER AND LAND SURVEYOR

Certificate of Survey

I Hereby Certify that this plat shows a survey made by me of the property described on this plat, and that the corners are correctly placed as shown, and that all locations have been correctly shown.

Surveyed For Richard Coverdale

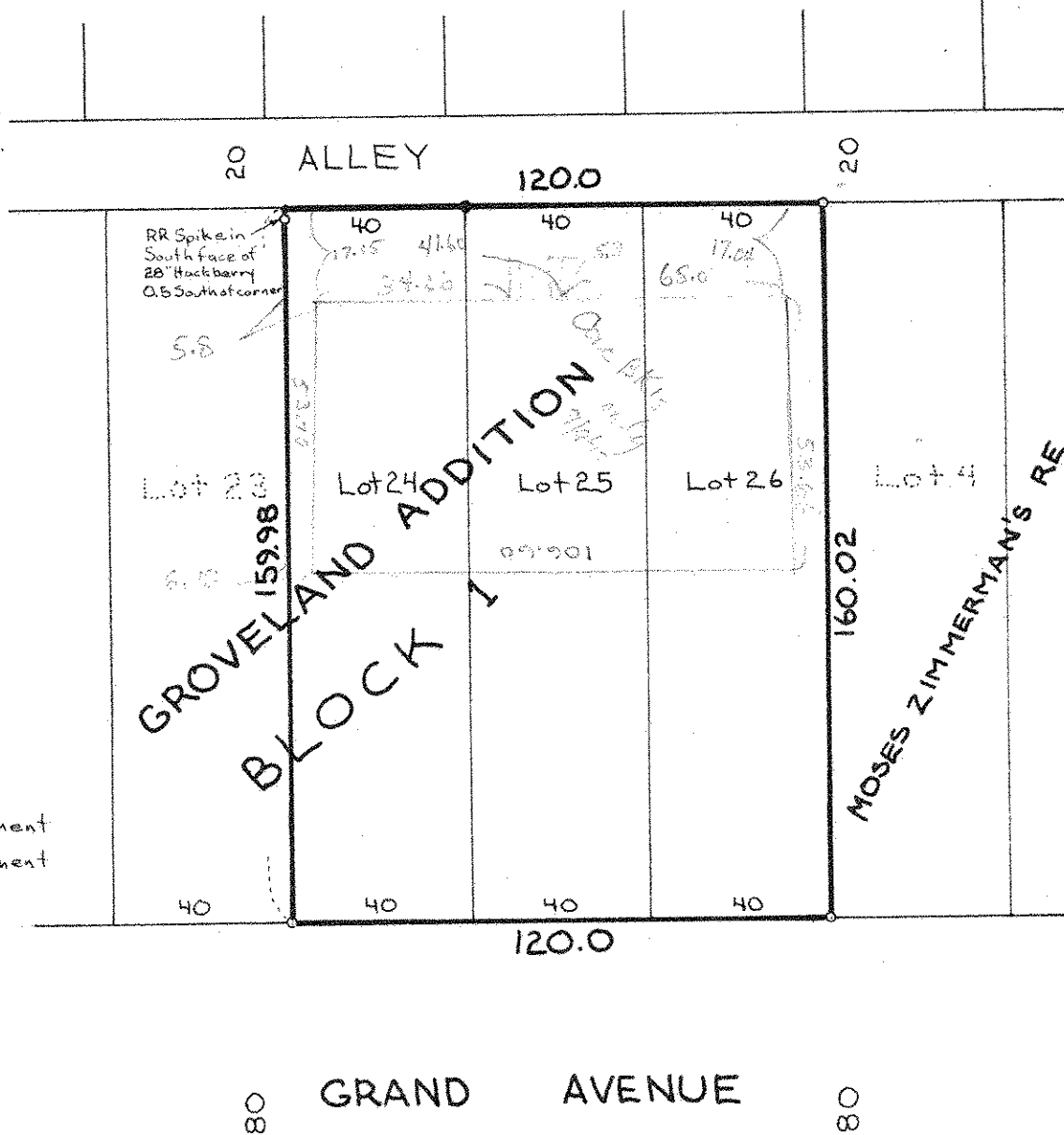
Date June 1975

Scale 1" = 40'

By Charles O. Georgi
REGISTERED LAND SURVEYOR

Description:

Lots 24, 25 and 26
Block 1
Groveland Addition
Ramsey County, Minn.



- Denotes Iron Monument
- Denotes Iron Monument found in place