

FROM THE OFFICE OF

CHARLES O. GEORGI COMPANY

2215 West County Road B

Saint Paul, Minnesota 55113

REGISTERED CIVIL ENGINEER AND LAND SURVEYOR



**Certificate
of Survey**

I Hereby Certify that this plat shows a survey made by me of the property described on this plat, and that the corners are correctly placed as shown, and that all locations have been correctly shown.

Surveyed For *Vic. Michels*

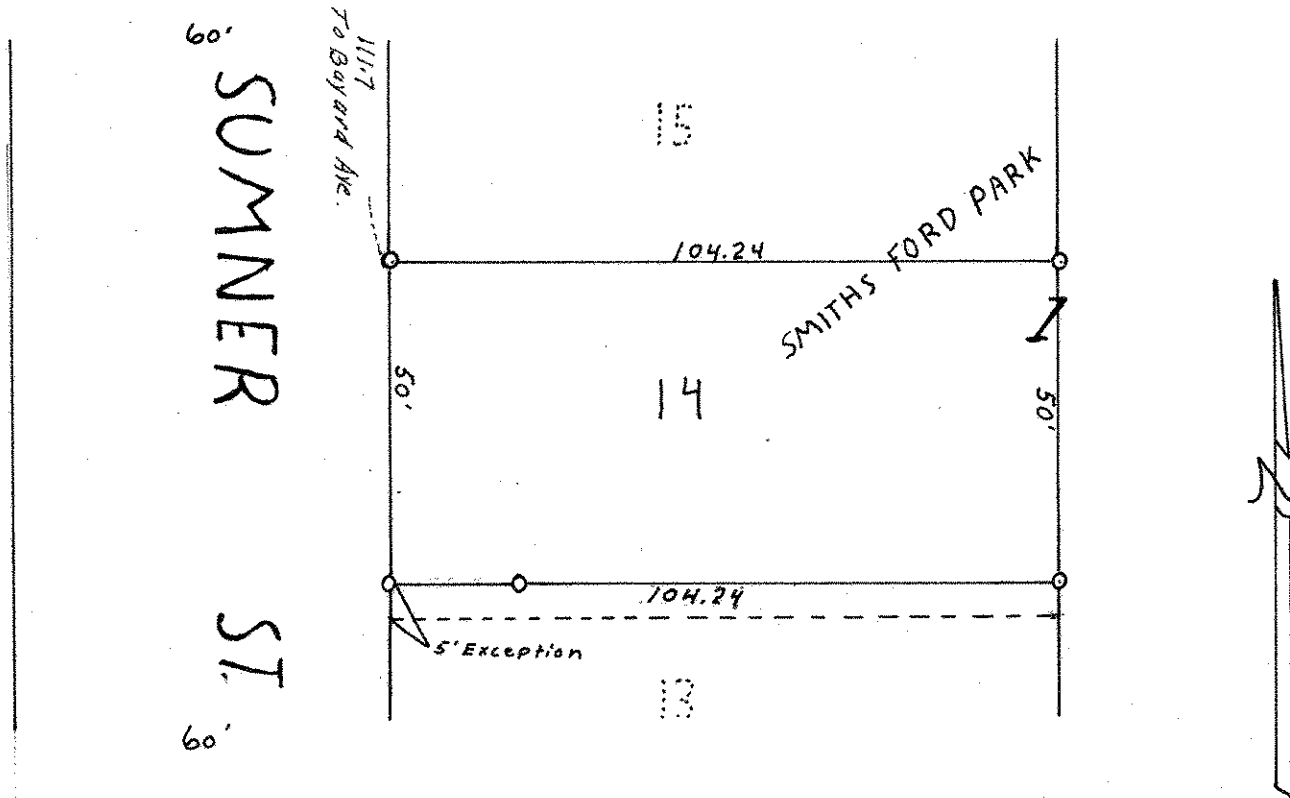
Date *Jan. 1962*

Scale *1" = 30'*

By *Charles O. Georgi*
REGISTERED LAND SURVEYOR

Description:

*Lot 14
Block 1
Except the South 5 Feet
Smith's Ford Park*



*o Denotes Iron Monument
0.07' excess per 55' lot.*