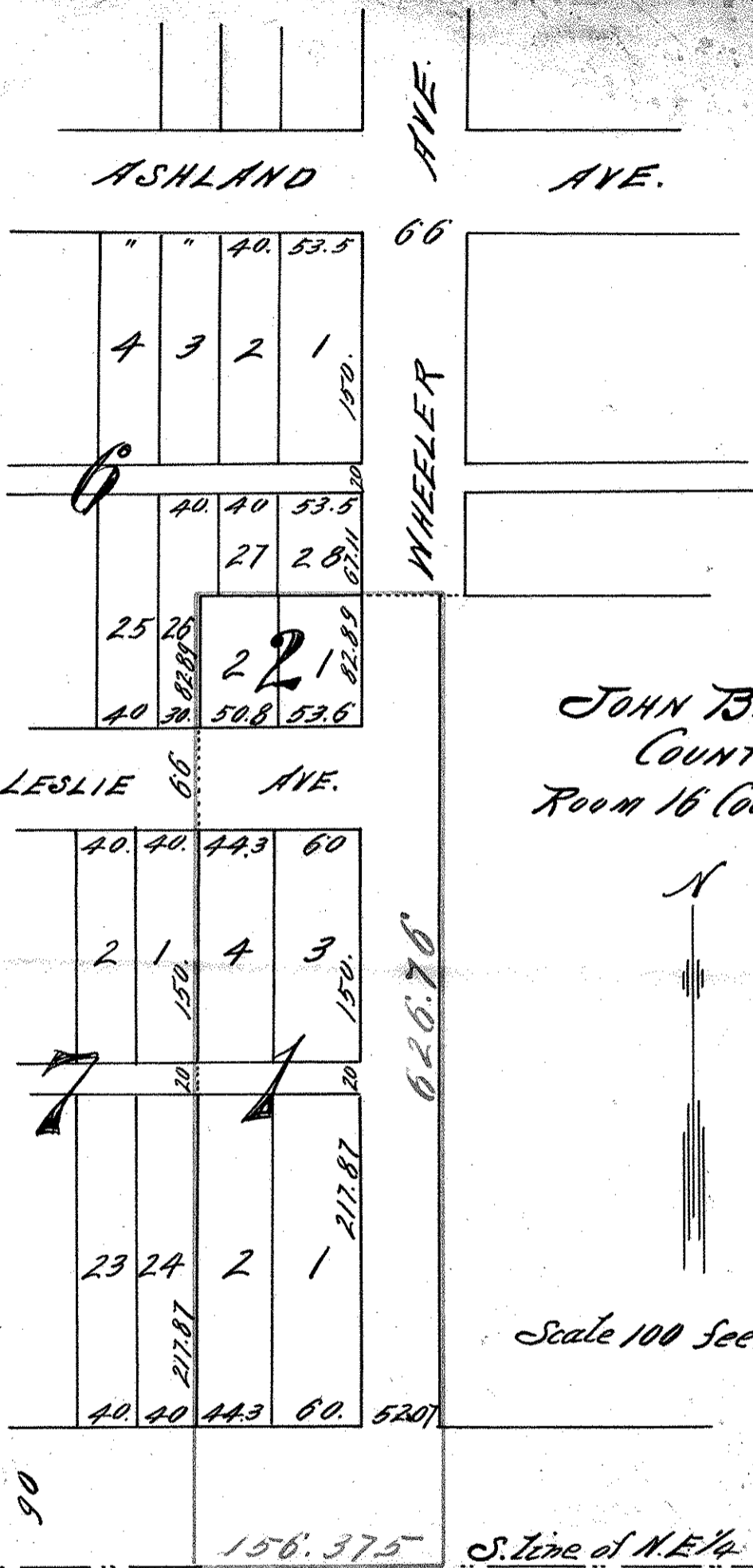


E. G. HANDY'S ADD.



JOHN B. IRVINE  
COUNTY SURVEYOR  
ROOM 16 COURT HOUSE  
ST. PAUL MINN.



Scale 100 feet per inch

90  
110

SUMMIT

S. line of N.E. 1/4 of  
Sec. 4, T. 28, R. 23 AVE.

JOHN B. IRVINE  
Co. Surveyor, R. 16, Court House

B. 15 R. 31

BALDWIN ST.