

MISSISSIPPI RIVER BOULEVARD ADDITION.

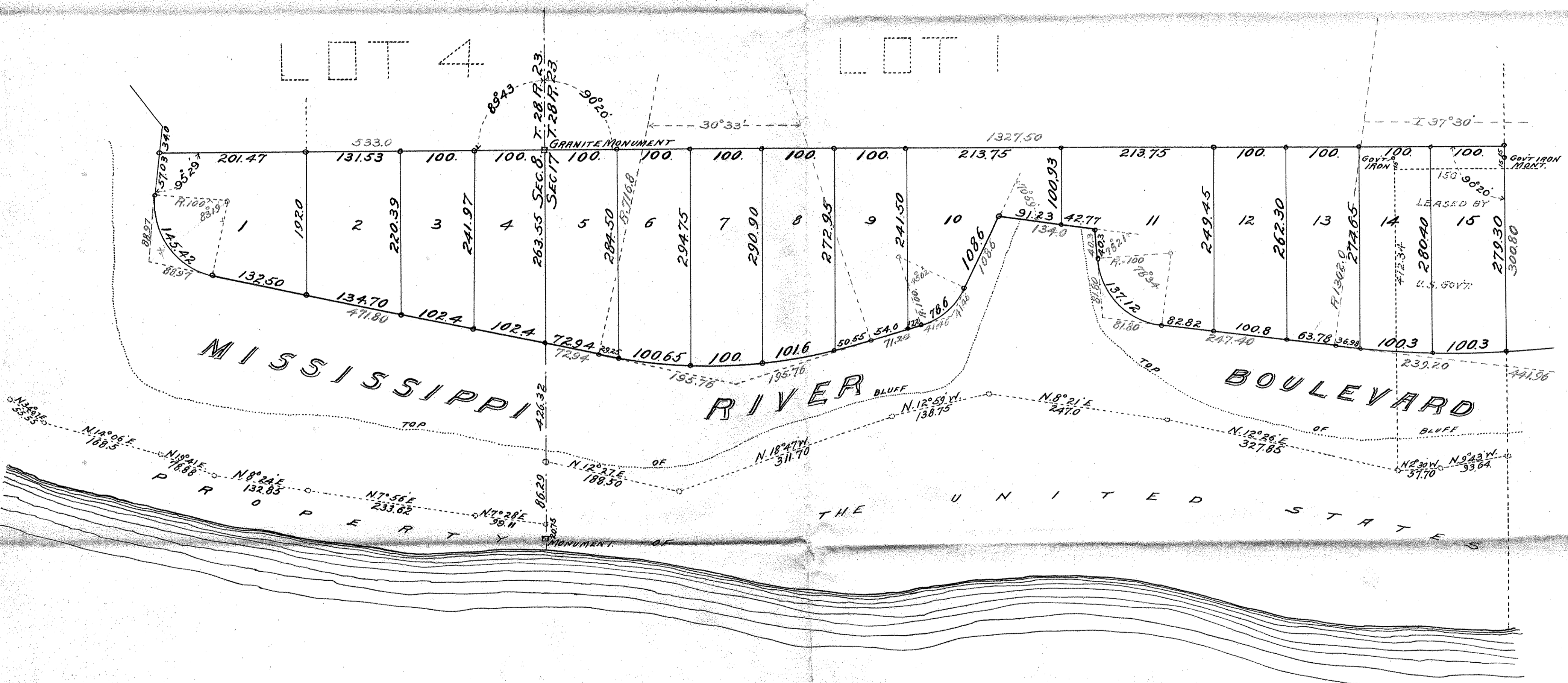
ST. PAUL, MINN.

SCALE 100ft. per inch.

JOHN B. IRVINE, SURVEYOR.

JANUARY, 1907.

o INDICATES IRONS



MISSISSIPPI RIVER BOULEVARD

THE UNITED STATES

MISSISSIPPI RIVER