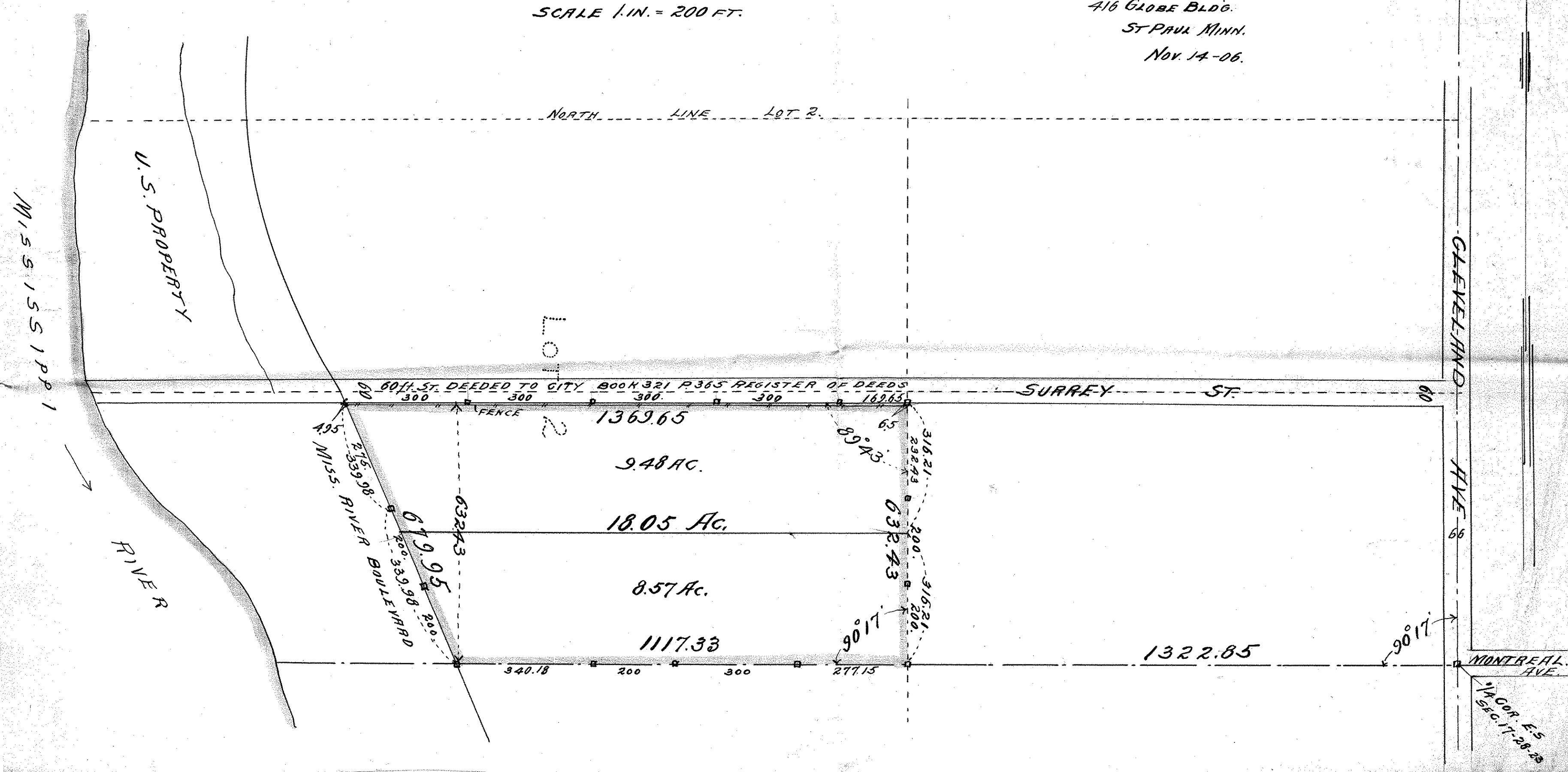


SOUTH 1/2 of LOT 2 SEC. 17, T. 28, R. 23.
 EXCEPT CLEVELAND AVE., SURREY ST., & MISS. RIVER BOULEVARD.

SCALE 1 IN. = 200 FT.

JOHN B. IRVINE, SURVEYOR.
 416 GLOBE BLDG.
 ST PAUL MINN.
 Nov. 14-06.



CLEVELAND AVE.
 MONTREAL AVE.
 COR. E. 5
 SEC. 17, T. 28, R. 23