

PLAT OF SURVEY

by
JOHN R. TURPIN
MINN. REGISTRATION NO. 6740
REGISTERED LAND SURVEYOR
ST. PAUL, MINNESOTA

I hereby certify that this is a true and correct plat of a survey of the land shown and described hereon, and that any monuments or markers indicated hereon have been placed as shown, and that any improvements or physical conditions indicated hereon are as shown.

Surveyed July 21, 1976

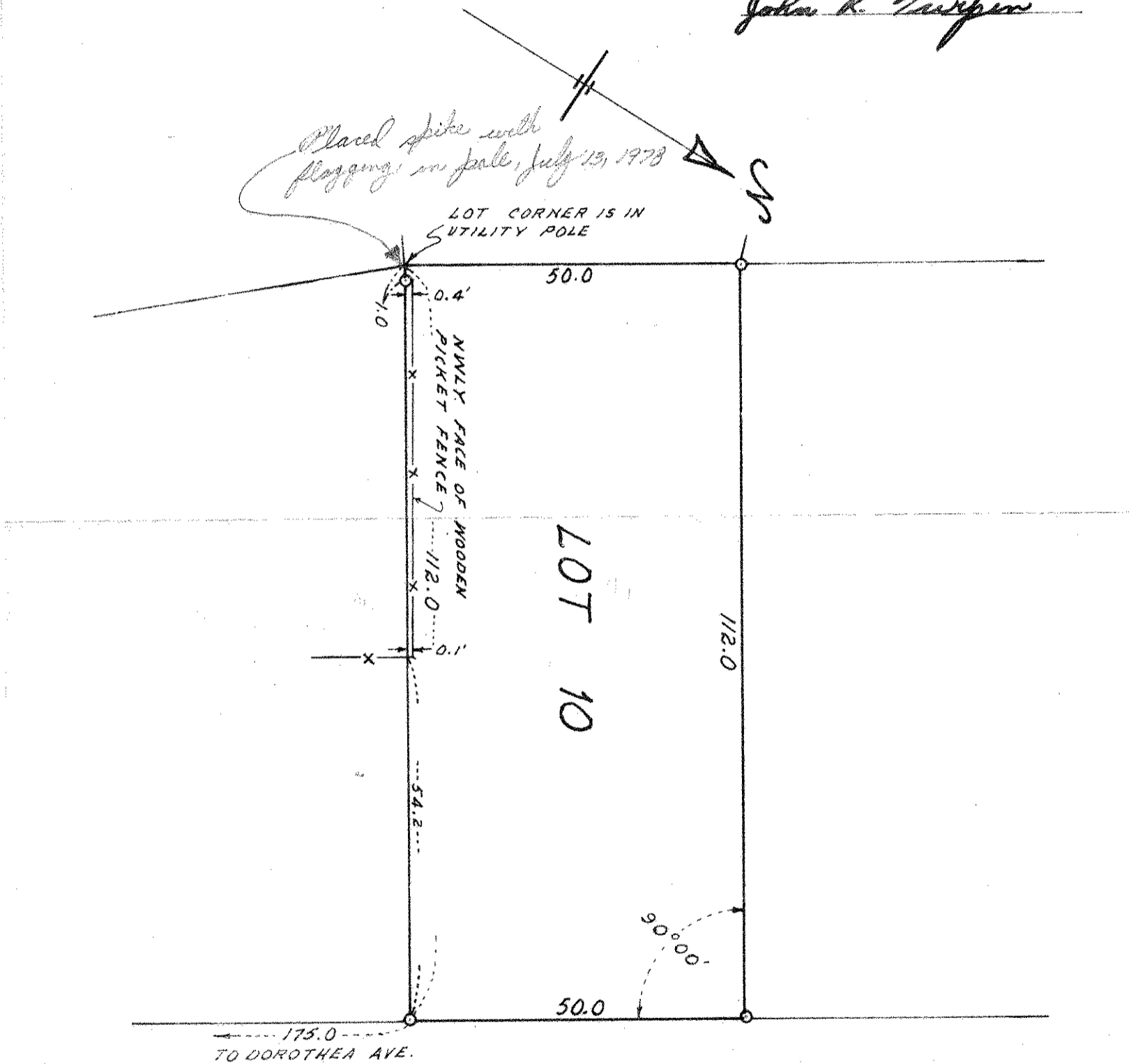
John R. Turpin

Plat Scale - 1 in. = 20 ft. \odot Indicates Iron Mont.

Description - Lot 10, Block 4, Bisanz Brothers Addition No. 2.

Wooden picket fence located as shown at time of survey and on August 12, 1976.

John R. Turpin



ST. PAUL

AVE.

104