

FROM THE OFFICE OF

CHARLES O. GEORGI COMPANY

2215 West County Road B

Saint Paul, Minnesota 55113

REGISTERED CIVIL ENGINEER AND LAND SURVEYOR



I Hereby Certify that this plat shows a survey made by me of the property described on this plat, and that the corners are correctly placed as shown, and that all locations have been correctly shown.

Surveyed For Housing Authority

Date November 1971

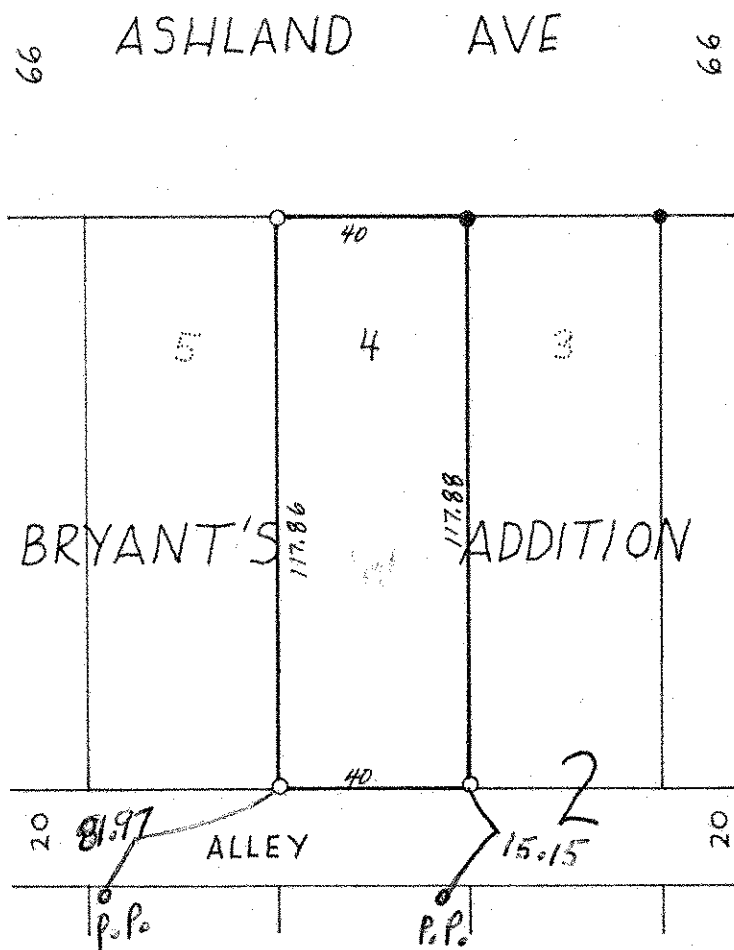
Scale 1" = 40'

By Charles O. Georgi
REGISTERED LAND SURVEYOR

Description: # 812 Ashland Ave.

Lot 4, Block 2, Bryant's Addition
Ramsey County, Minnesota

Contains: 4715 Sq. ft., more or less.



○ Denotes Iron Monument
● Denotes Iron Found in place