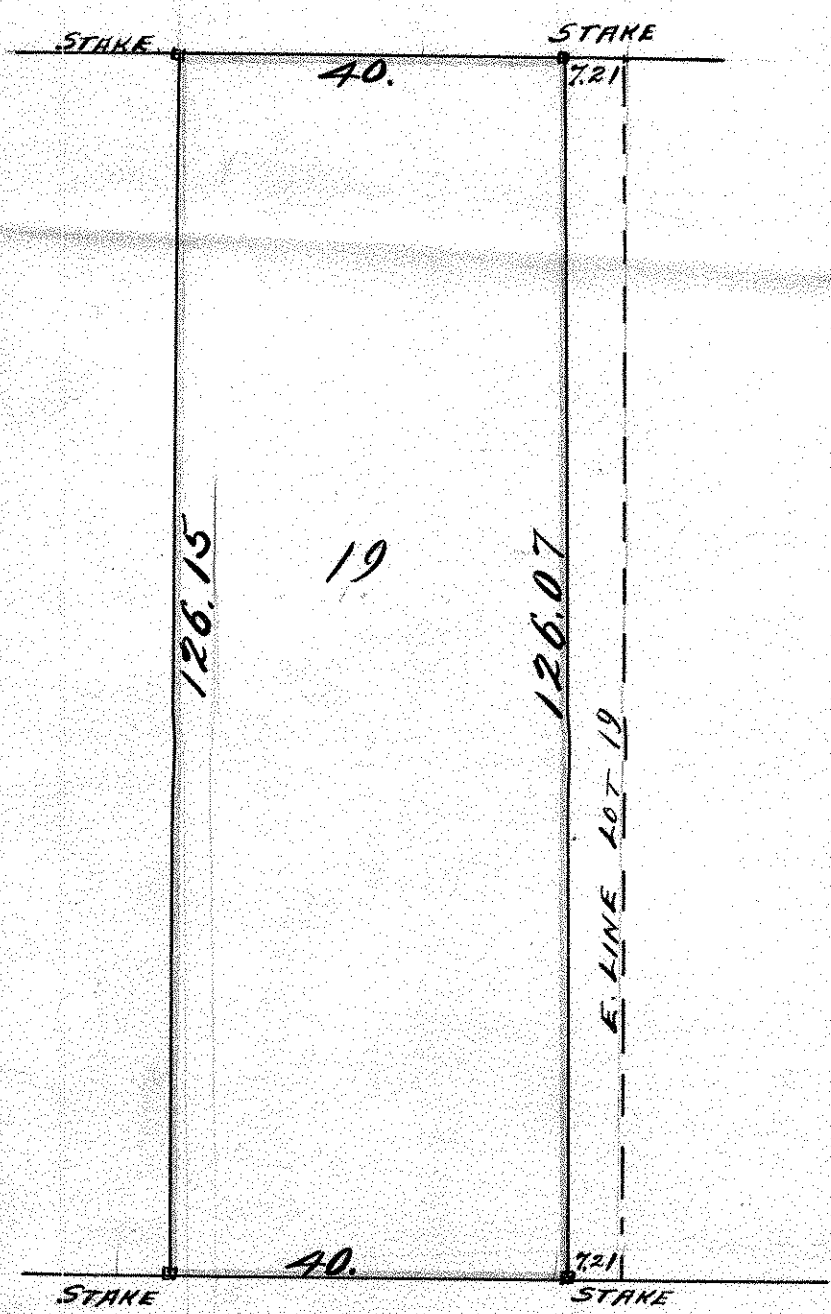


WEST 40 FT LOT 19.  
A. V. BROWN'S SUB. BLK 32  
STINSON, BROWN & RAMSEY'S ADD.

JOHN B. IRVINE, SURVEYOR  
ROOM 508 GLOBE BLDG  
SCALE 20'-1" ST PAUL MINN  
MAY 2-05



RANDOLPH ST.