

SE 12823

FROM THE OFFICE OF

# CHARLES O. GEORGI COMPANY

2215 West County Road B

Saint Paul, Minnesota 55113

REGISTERED CIVIL ENGINEER AND LAND SURVEYOR

## Certificate of Survey

I Hereby Certify that this plat shows a survey made by me of the property described on this plat, and that the corners are correctly placed as shown, and that all locations have been correctly shown.

Surveyed For G. Pouolny

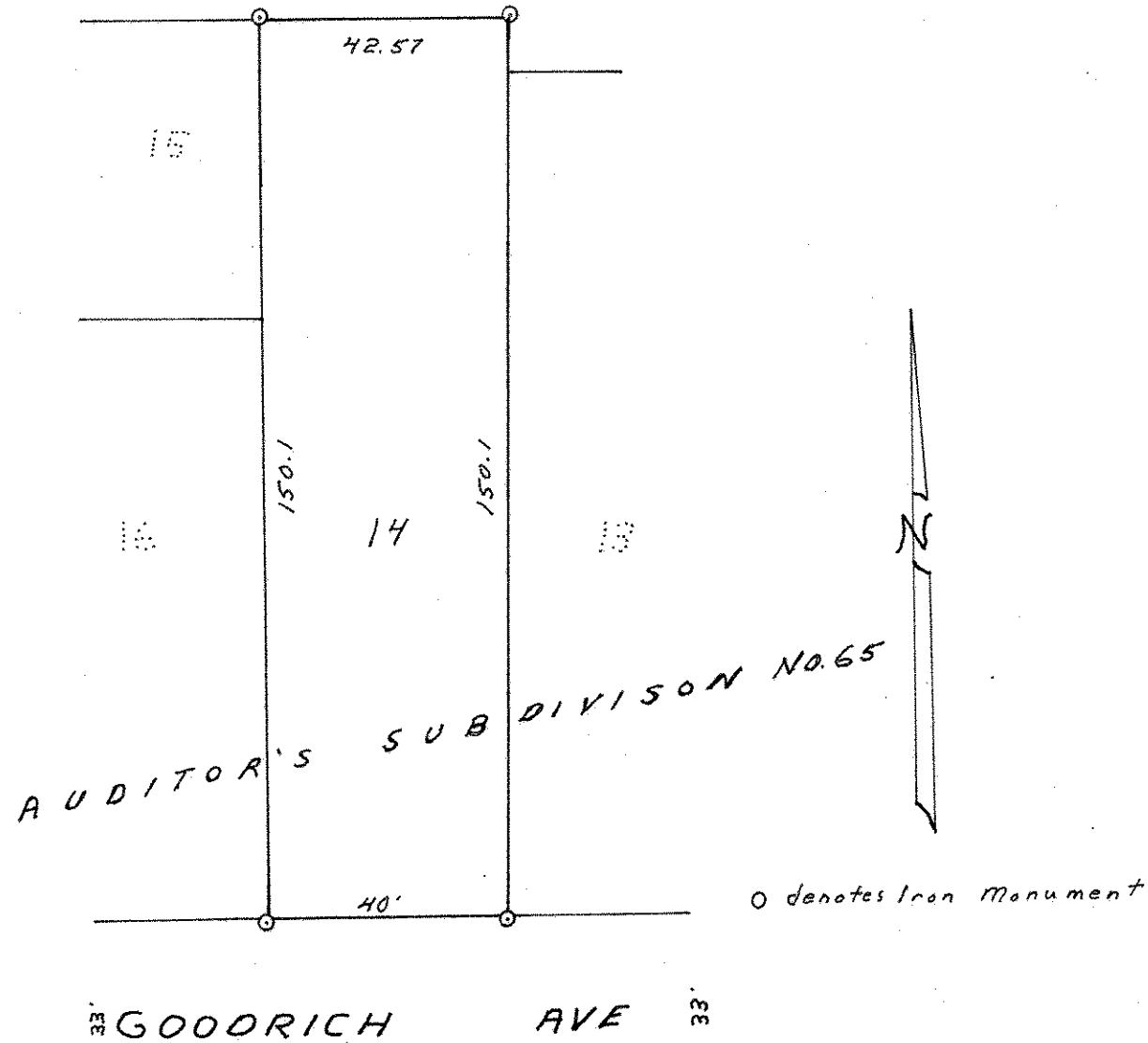
Date July 1969

Scale 1" = 30'

By Charles O. Georgi  
REGISTERED LAND SURVEYOR

### Description:

Lot 14,  
Auditor's Subdivision No 65,  
Ramsey County, Minn.



\* Used record distances for lot to agree with  
irons found in place although there is a small  
excess to East.