

FROM THE OFFICE OF

CHARLES O. GEORGI COMPANY

2215 West County Road B

Saint Paul 13, Minnesota

REGISTERED CIVIL ENGINEER AND LAND SURVEYOR

Certificate of Survey

I Hereby Certify that this plat shows a survey made by me of the property described on this plat, and that the corners are correctly placed as shown, and that all locations have been correctly shown.

Surveyed For *Theodore Sanborn*

Date *June 26, 1964*

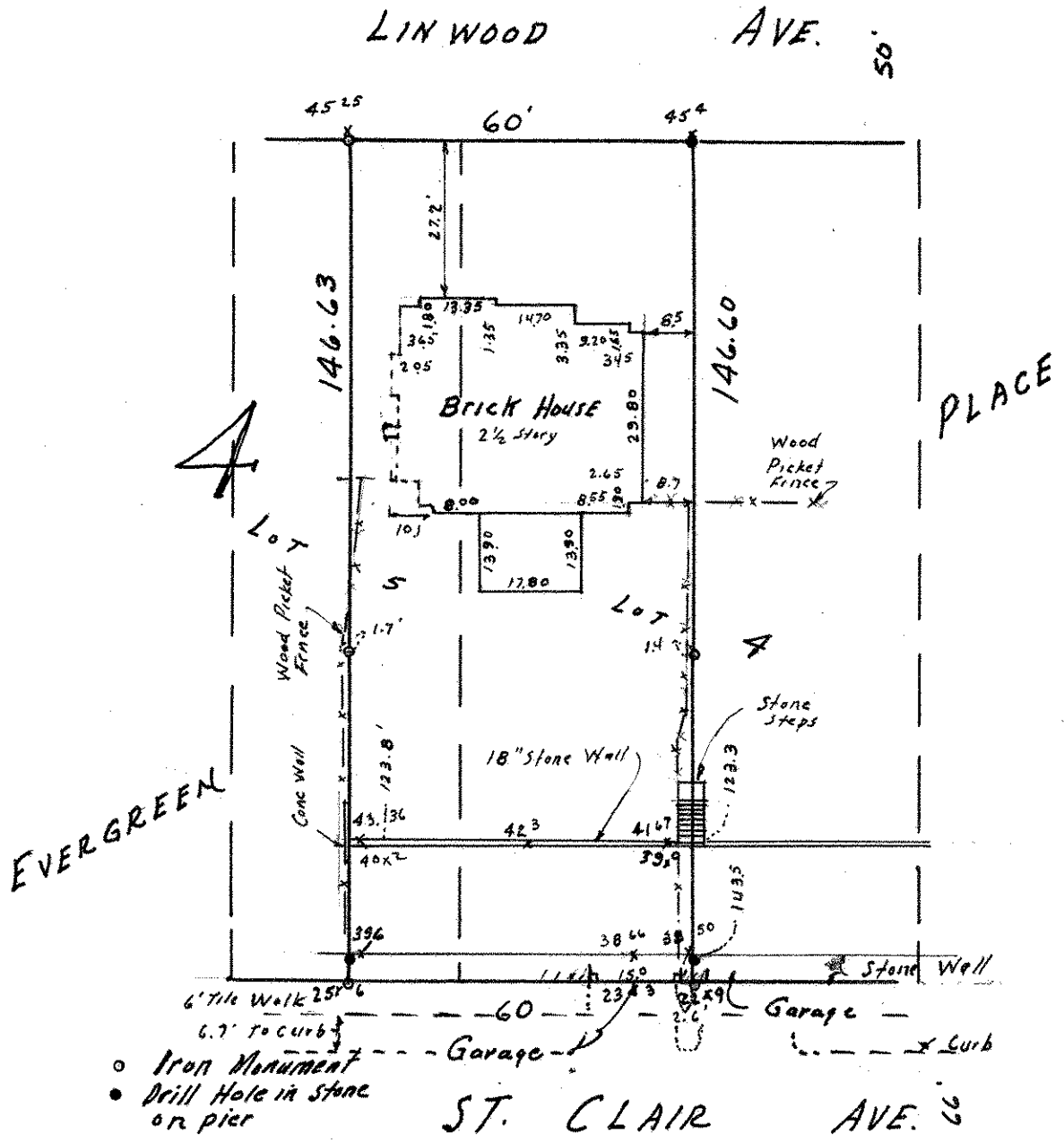
Scale *1"=30'*

Description: *Lot 4 and the East 1/2 of Lot 5
Block 4
EVERGREEN PLACE*

By *Charles O. Georgi*
REGISTERED LAND SURVEYOR

BM = 50.00 1st floor of house at front entrance.
45.4 x - Elevation & location

Note: House & Garage was locked - omit Tunnel location



- Iron Monument
- Drill Hole in stone or pier