


FROM THE OFFICE OF

CHARLES O. GEORGI COMPANY

2215 West County Road B

Saint Paul, Minnesota 55113

REGISTERED CIVIL ENGINEER AND LAND SURVEYOR



Certificate of Survey

I Hereby Certify that this plat shows a survey made by me of the property described on this plat, and that the corners are correctly placed as shown, and that all locations have been correctly shown.

Surveyed For *Joseph Tracy*.....

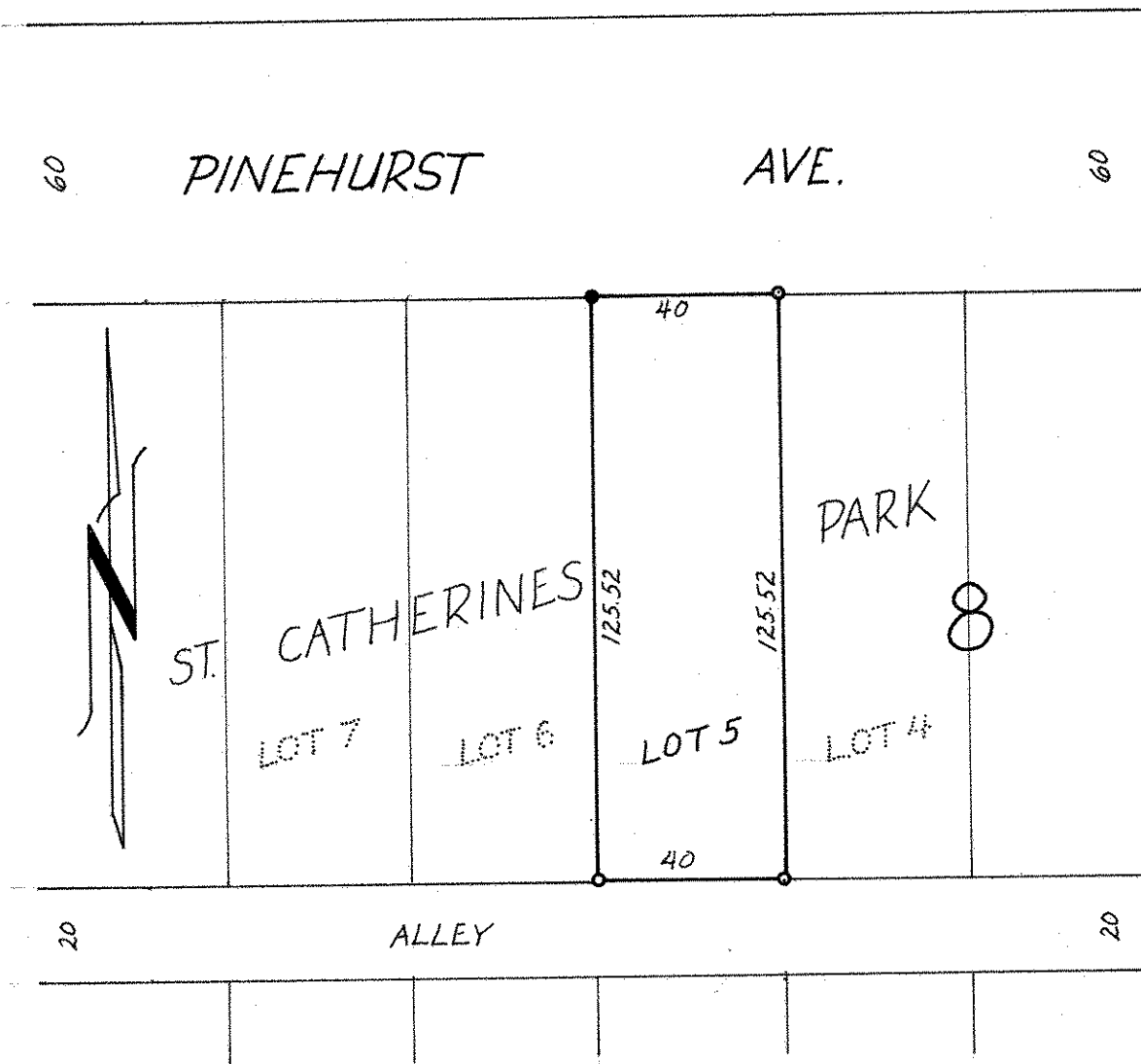
Date *April, 1971*.....

Scale *1" = 40'*.....

By *Charles O. Georgi*.....
REGISTERED LAND SURVEYOR

Description:

*Lot 5, Block 8, St. Catherines Park,
Ramsey County, Minnesota.*



- Denotes Iron Pipe Monument.
- Denotes Iron Pipe Monument found in place