

NE 11 20 23

FROM THE OFFICE OF

# CHARLES O. GEORGI COMPANY

2215 West County Road B

Saint Paul, Minnesota 55113

REGISTERED CIVIL ENGINEER AND LAND SURVEYOR

## Certificate of Survey

I Hereby Certify that this plat shows a survey made by me of the property described on this plat, and that the corners are correctly placed as shown, and that all locations have been correctly shown.

Project No. Minn A-1-7

Parcel No. 139-A

Area: 5645 Sq. Ft., m.o.L.

Surveyed For *Housing Authority*

Date *August 1973*

Scale *1"=40'*

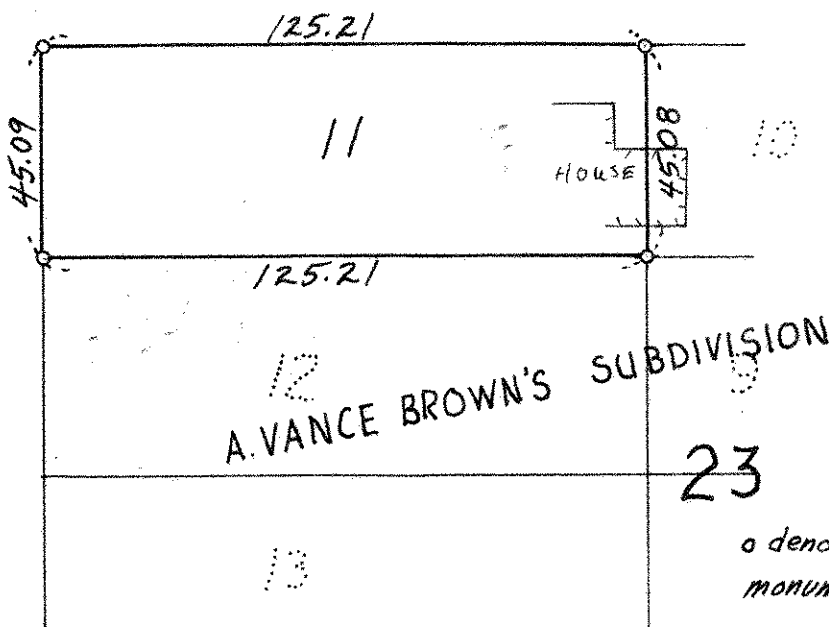
By *Charles O. Georgi*  
REGISTERED LAND SURVEYOR

**Description:**

Lot 11, Block 23, A. Vance Brown's  
Subdivision of "Stinson, Brown and  
Ramsey's" Addition to St. Paul,  
Ramsey County, Minnesota.

PALACE AVE. 66

VANCE ST. 66



o denotes iron pipe monuments.