

N.E. 11, 28, 23.

FROM THE OFFICE OF

# CHARLES O. GEORGI COMPANY

2215 West County Road B

Saint Paul, Minnesota 55113

REGISTERED CIVIL ENGINEER AND LAND SURVEYOR

*Plat*  
*Survey*

*I Hereby Certify that this plat shows a survey made by me of the property described on this plat, and that the corners are correctly placed as shown, and that all locations have been correctly shown.*

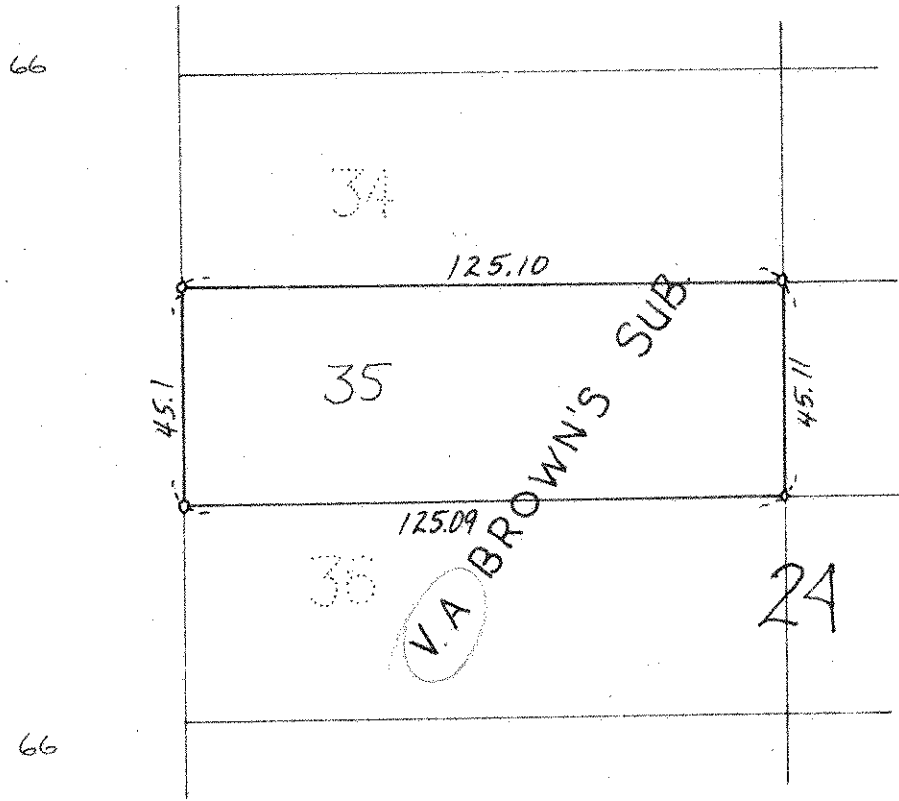
Project No. Minn. A-1-7  
Parcel No. 138A  
Area 5642 sq. ft., more or less.

Surveyed For *Housing Authority*  
Date *March 1973*  
Scale *1" = 40'*

By *Charles O. Georgi*  
REGISTERED LAND SURVEYOR

*Location:*  
*Lot 35, Block 2A, V.A. Brown's Subdivision of Block 19, 2A and the East half of 26, in Stinson's, Brown + Ramsey's Addition to the City of St. Paul, Ramsey County, Minnesota.*

BAY ST.



*o denotes iron pipe monument.*