

**Certificate  
of Survey**

From the office of  
**GEORGI-SCHMIDT & ASSOC. INC.**

3092 No. Lexington Ave., Roseville, Mn. 55113

LAND SURVEYING

483-4408

I Hereby Certify that this plat shows a survey made by me of the property described on this plat, and that the corners are correctly placed as shown, and that all locations have been correctly shown.

4/22/79 Revised curve data & sq. footage Revised

Surveyed For Housing Authority

Date 2/19/79

Scale 1" = 40'

By Donald W. Schmidt  
REGISTERED LAND SURVEYOR

Job Number: 253

Contract No. 71-1

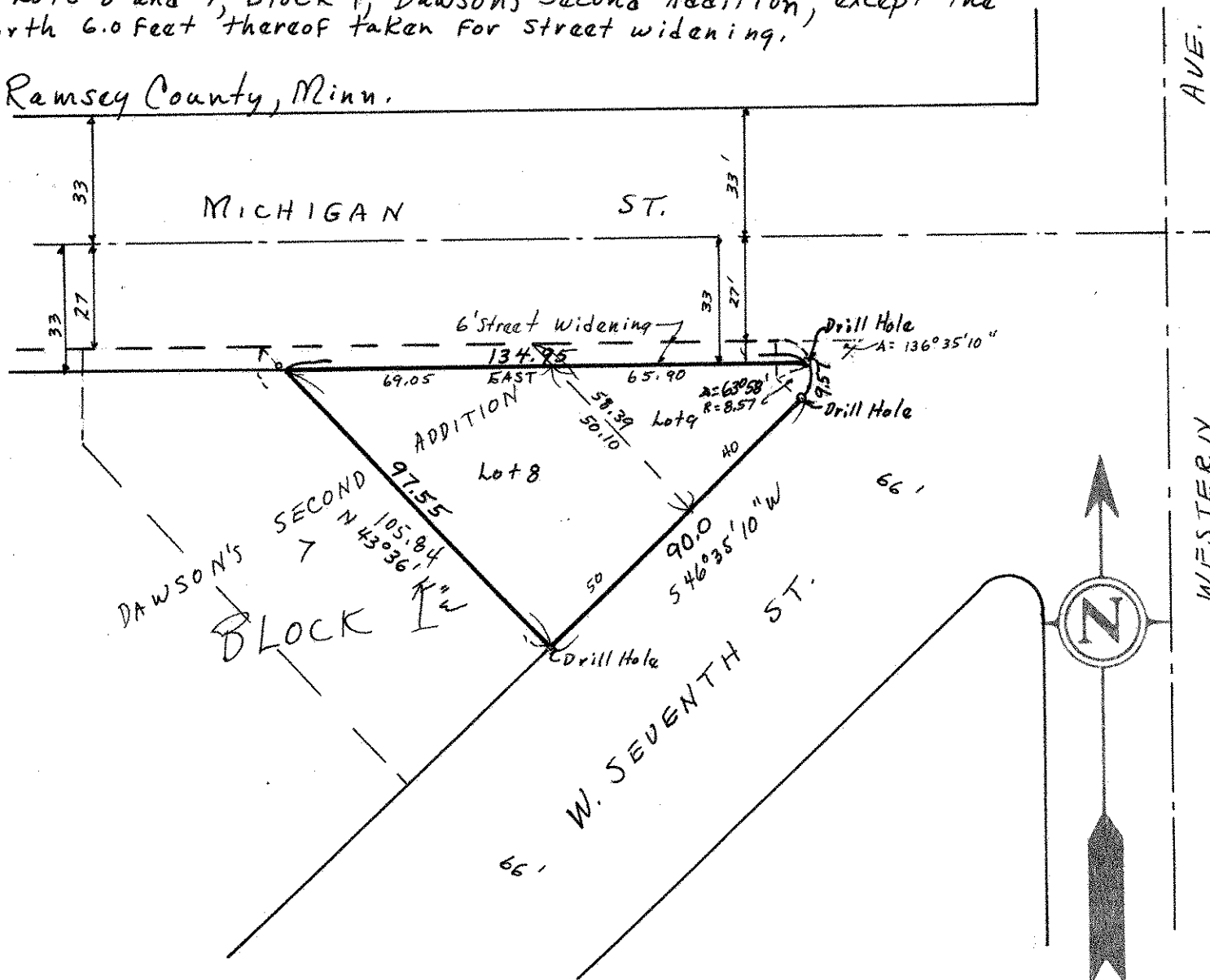
Survey for 71-1, 611 W 7th St.

District 9 - Contains 499 sq. ft., m.o.l.

**Description:**

Lots 8 and 9, Block 1, Dawson's Second Addition, except the North 6.0 feet thereof taken for street widening.

Ramsey County, Minn.



o Denotes Iron Monument