

FROM THE OFFICE OF

CHARLES O. GEORGI COMPANY

2215 West County Road B

Saint Paul, Minnesota 55113

REGISTERED CIVIL ENGINEER AND LAND SURVEYOR

**Certificate
of Survey**

Project No. Minn. A-1-7
Parcel No. 143-B
Area 4,747 sq. ft. m.o.l.

I Heroby Certify that this plat shows a survey made by me of the property described on this plat, and that the corners are correctly placed as shown, and that all locations have been correctly shown.

Surveyed For Housing Authority

Date July 1976

Scale 1" = 40'

By *Charles O. Georgi*
REGISTERED LAND SURVEYOR

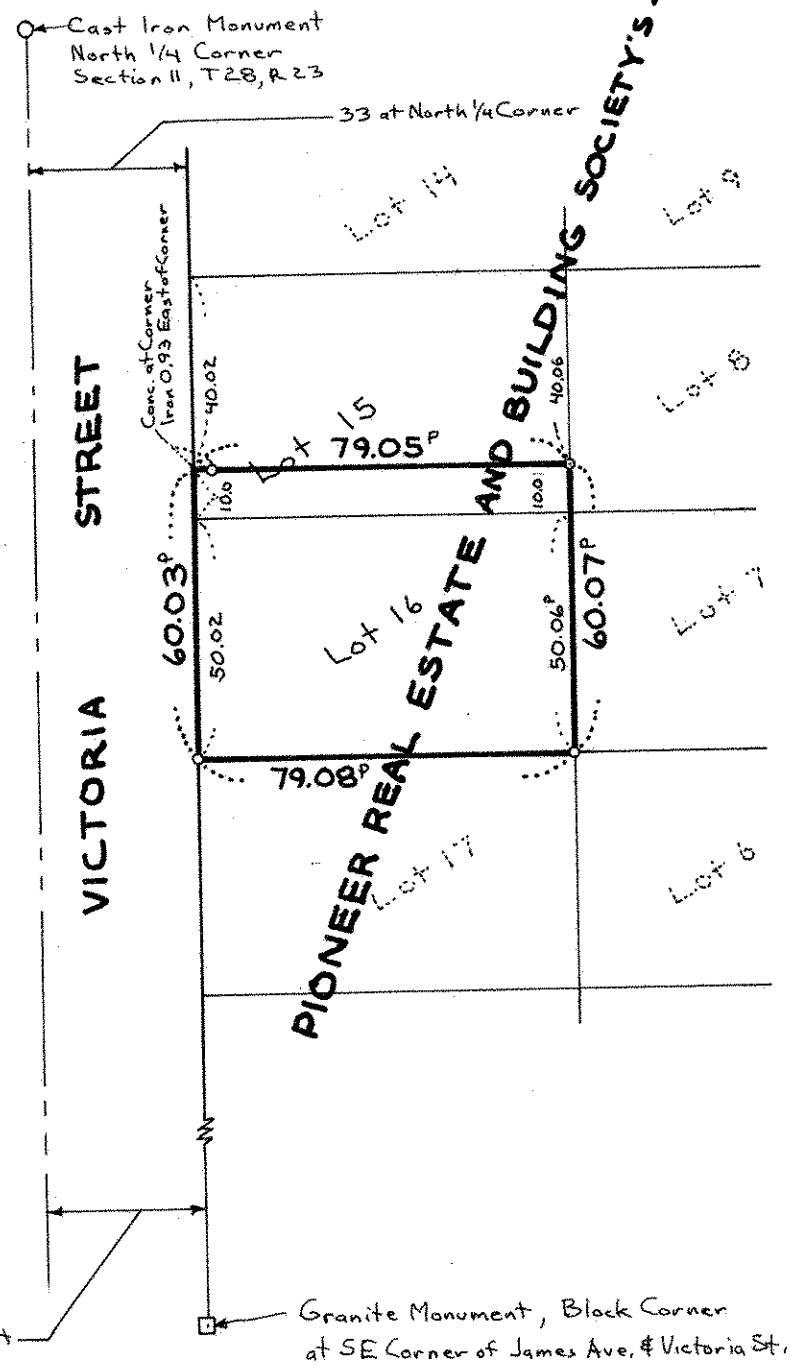
Description:

Lot 16 and the South 10 feet of Lot 15,
Map of The Pioneer Real Estate and Building
Society's Subdivision of Block 36, Stinson,
Brown and Ramsey's Addition to the City of
St. Paul, Ramsey County, Minnesota.



o Denotes Iron Pipe Monument
P Denotes Prorated Distance

32.27 at Cast Iron Monument
at Center of Section



Granite Monument, Block Corner
at SE Corner of James Ave. & Victoria St.