

FROM THE OFFICE OF

CHARLES O. GEORGI COMPANY

2215 West County Road B

Saint Paul 13, Minnesota

REGISTERED CIVIL ENGINEER AND LAND SURVEYOR

**Certificate
of Survey**

I Hereby Certify that this plat shows a survey made by me of the property described on this plat, and that the corners are correctly placed as shown, and that all locations have been correctly shown.

Surveyed For *Charles E. Walsh*

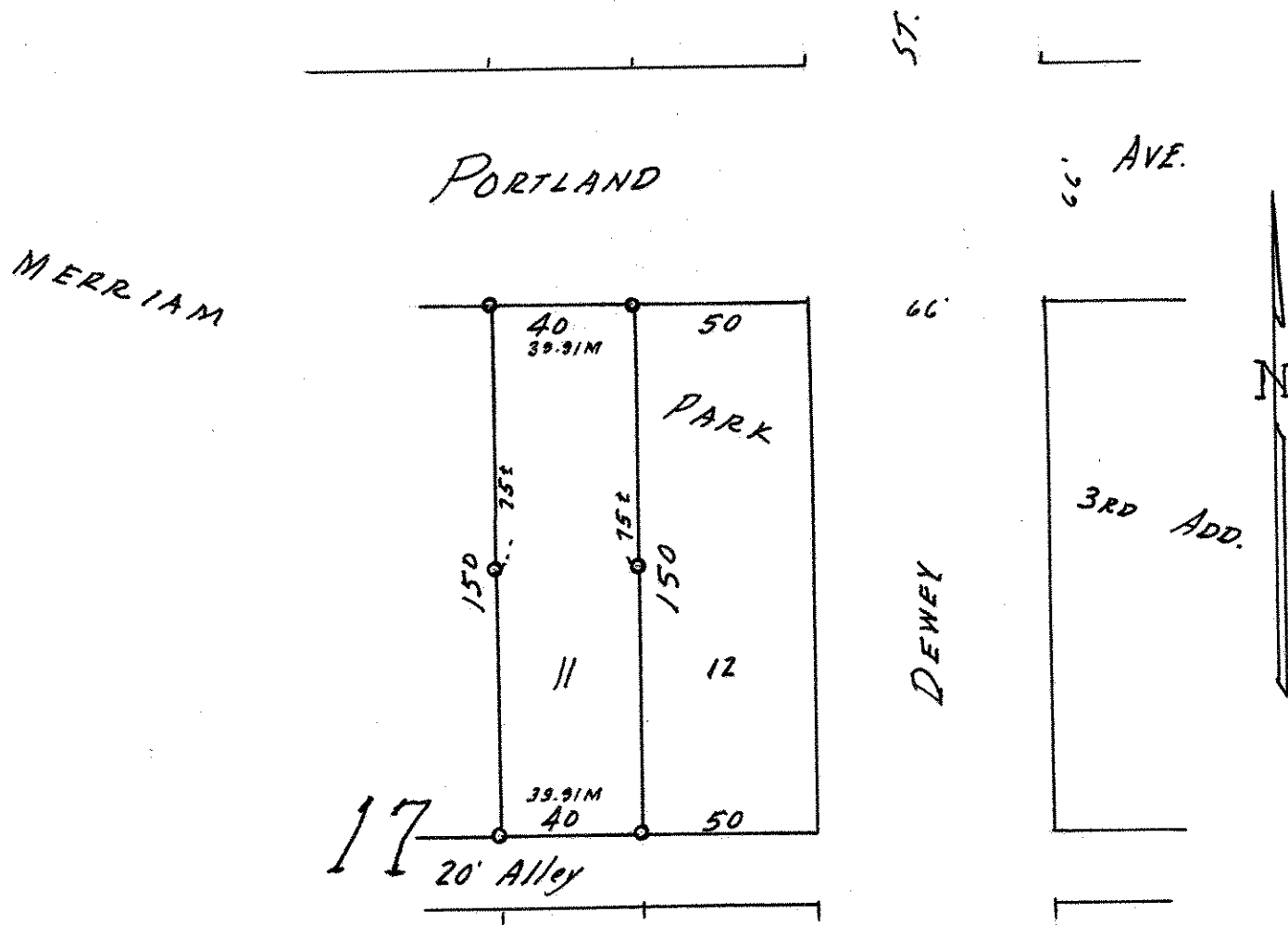
Date *August 1963*

Scale *1" = 50'*

By *Charles O. Georgi*
REGISTERED LAND SURVEYOR

Description:

*Lot 11
Block 17
MERRIAM PARK, THIRD ADDITION*



• Denotes Iron Monument
M Denotes Pro-rated Measure for Lot.