

SW 4 28 23

FROM THE OFFICE OF

CHARLES O. GEORGI COMPANY

2215 West County Road B

Saint Paul 13, Minnesota

REGISTERED CIVIL ENGINEER AND LAND SURVEYOR

Certificate of Survey

I Hereby Certify that this plat shows a survey made by me of the property described on this plat, and that the corners are correctly placed as shown, and that all locations have been correctly shown.

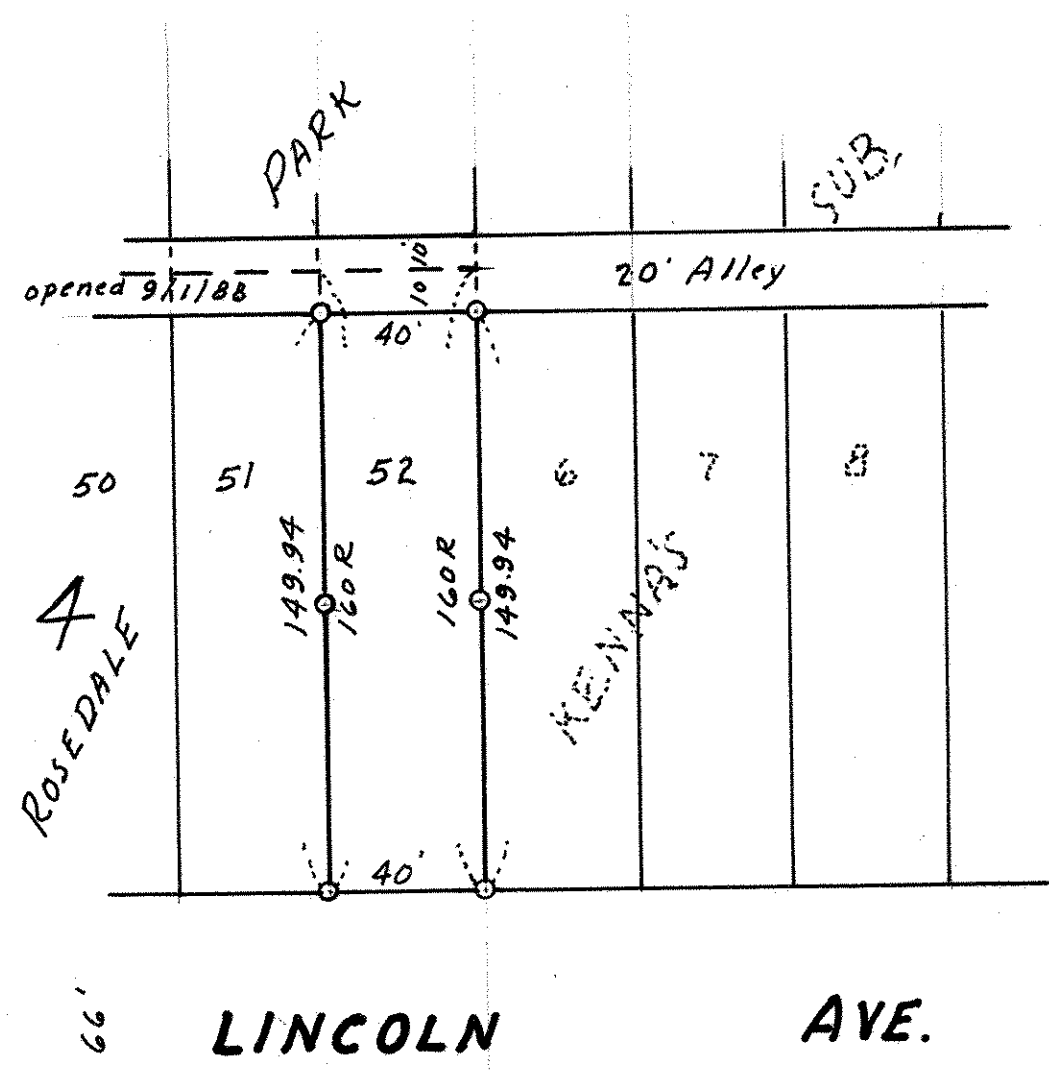
Surveyed For A. J. CURRY

Date November 1958

Scale 1" = 50'

By Charles O. Georgi
REGISTERED LAND SURVEYOR

Description: Lot 52
Block 4
Rosedale Park Addition to City of St. Paul.



○ Denotes Iron Monument

R- Record Measurement.