


FROM THE OFFICE OF

CHARLES O. GEORGI COMPANY

2215 West County Road B

Saint Paul, Minnesota 55113

REGISTERED CIVIL ENGINEER AND LAND SURVEYOR



**Certificate
of Survey**

I Hereby Certify that this plat shows a survey made by me of the property described on this plat, and that the corners are correctly placed as shown, and that all locations have been correctly shown.

Surveyed For... Crown Construction

Date... June 1976

Scale... 1"=40'

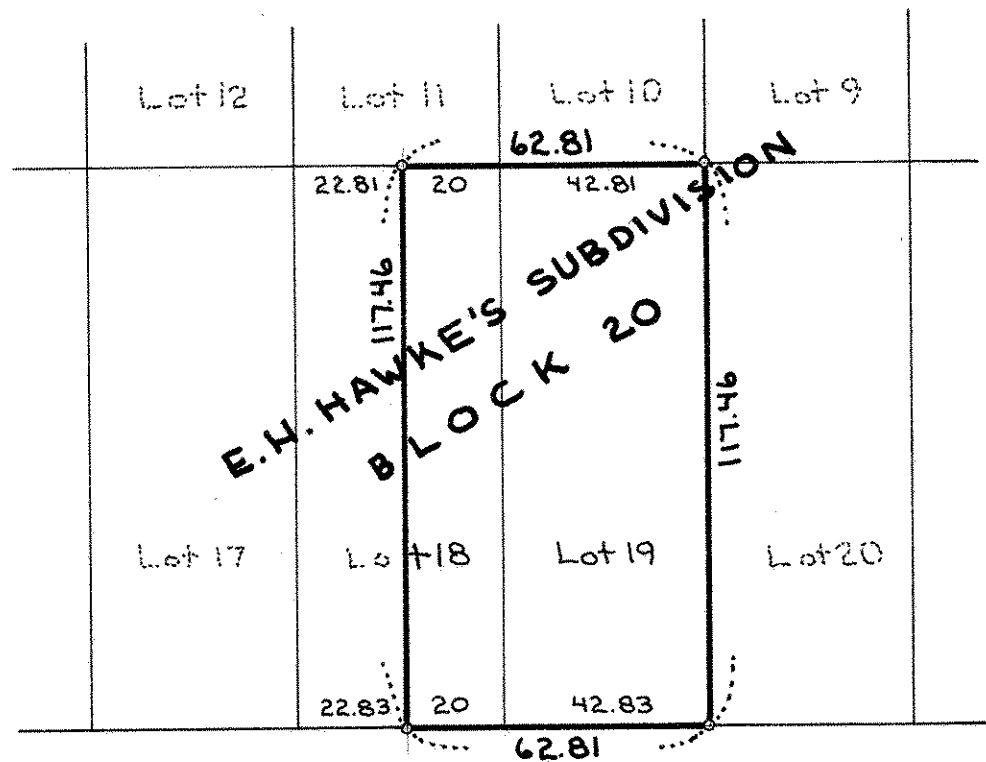
By Charles O. Georgi
REGISTERED LAND SURVEYOR

Description:

The East 20 feet of Lot 18, and Lot 19,
Block 20,
E. H. Hawke's Subdivision of Winslow's Addition,
Ramsey County, Minnesota.



• Denotes Iron Monument



66

GOODHUE

ST.

66