

BLOCK 10 BIRMINGHAM'S 4th ADD.

JOHN B. IRVINE, SURVEYOR.

408 GLOBE BLDG.

ST. PAUL, MINN.

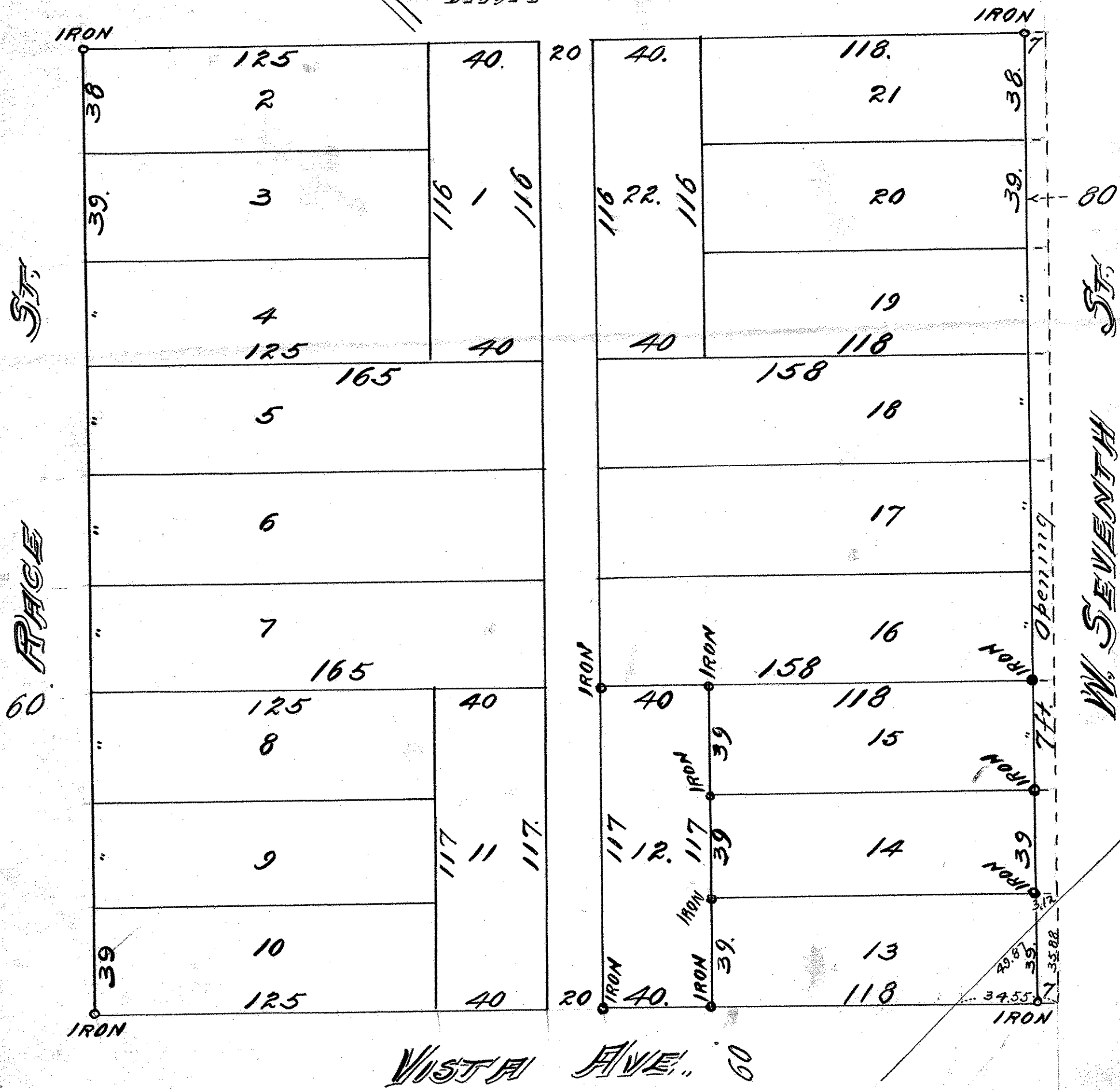
AUG. 16-09. & APRIL 19-1910.

SCALE 40ft. per inch.

Irons at all lot corners.

MAY

ST. 60



201