

Certificate of Survey

From the office of
GEORGI-SCHMIDT & ASSOC. INC.

3092 No. Lexington Ave., Roseville, Mn. 55113

LAND SURVEYING

483-4408

I Hereby Certify that this plat shows a survey made by me of the property described on this plat, and that the corners are correctly placed as shown, and that all locations have been correctly shown.

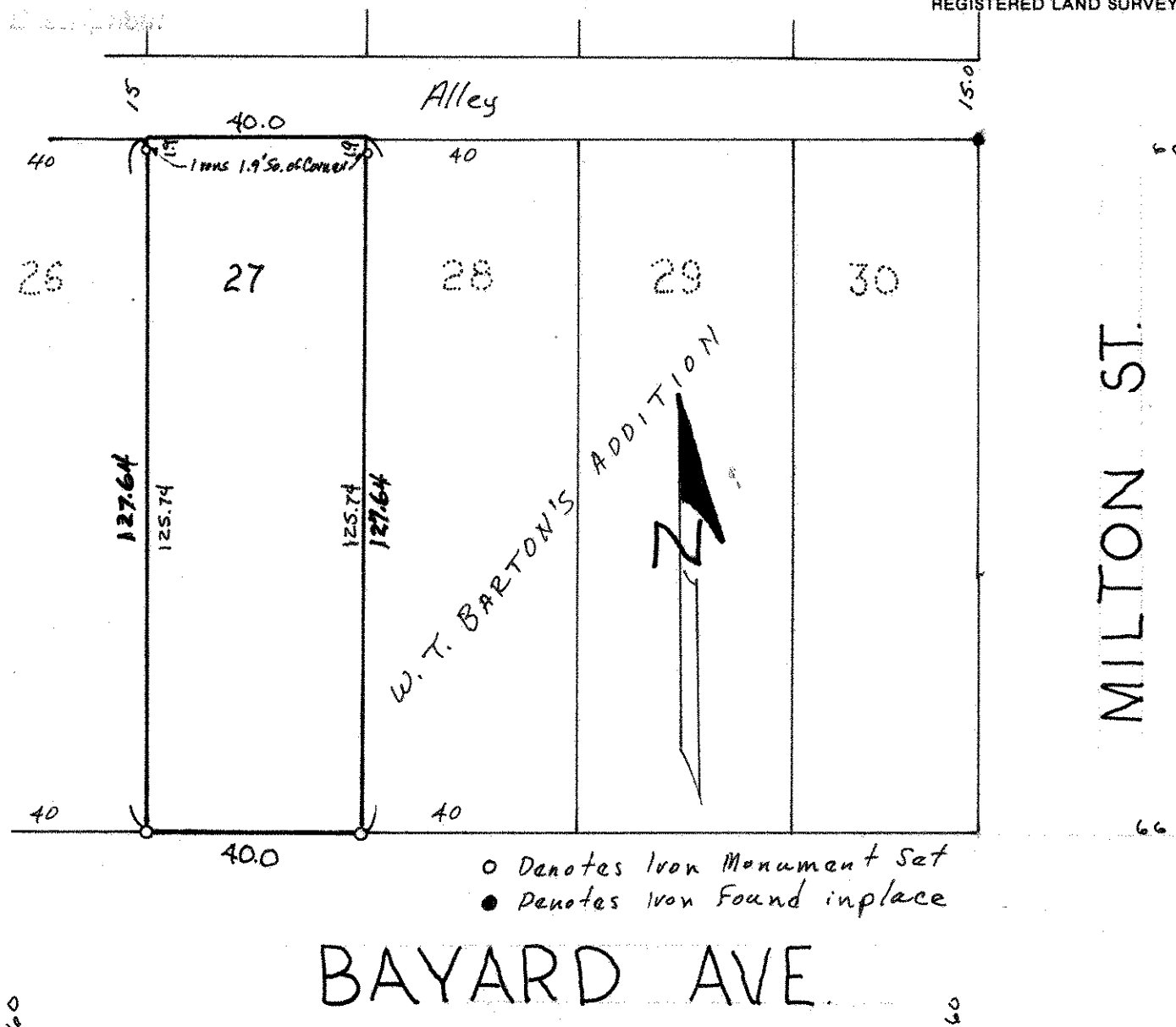
Job Number: 719

Surveyed For Byron K. Allman

Date Aug 16, 1980

Scale 1" = 30'

By Donald W. Schmitt
REGISTERED LAND SURVEYOR



DESCRIPTION:

Lot 27, W. T. Barton's Addition

Ramsey County, Minnesota