

FROM THE OFFICE OF

**CHARLES O. GEORGI COMPANY**

2215 West County Road B

Saint Paul, Minnesota 55113

REGISTERED CIVIL ENGINEER AND LAND SURVEYOR

**Certificate  
of Survey**

*I Hereby Certify that this plat shows a survey made by me of the property described on this plat, and that the corners are correctly placed as shown, and that all locations have been correctly shown.*

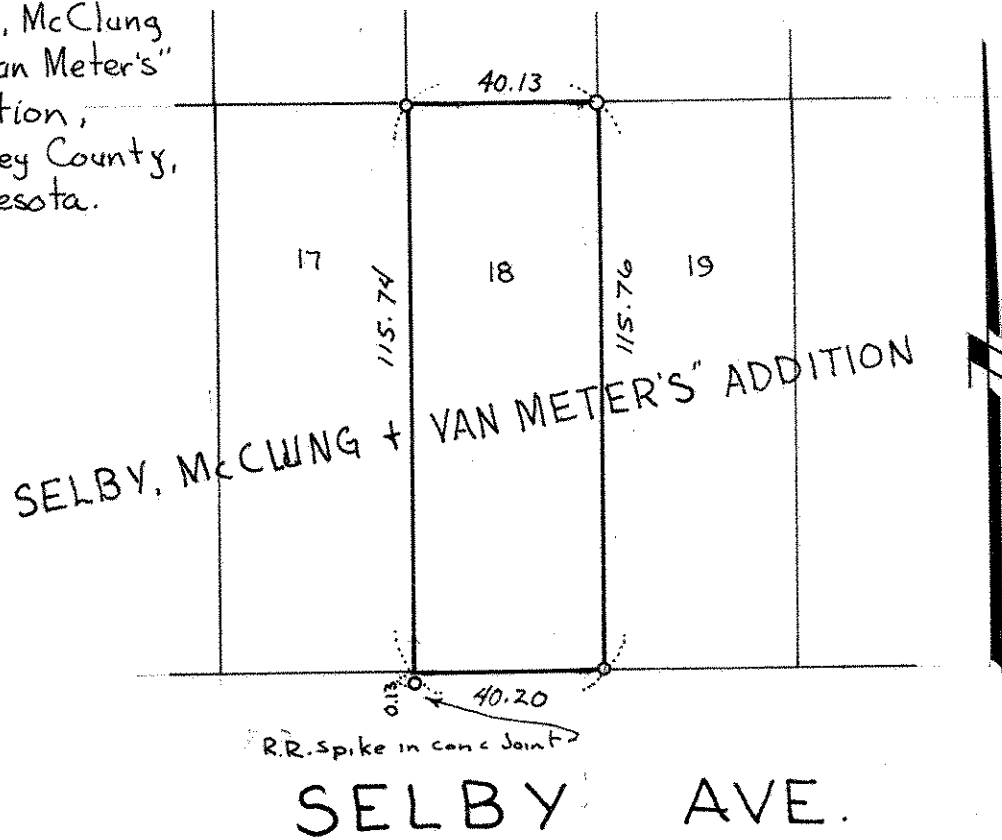
Project No. Minn A-1-1  
Parcel No. 127-B  
Area 4,649 Sq. ft. m.o.l.

Surveyed For *Housing Authority*  
Date *January 1977*  
Scale *1" = 40'*

By *Charles O. Georgi*  
REGISTERED LAND SURVEYOR

**Description:**

Lot 18, Block 2,  
"Selby, McClung  
and Van Meter's"  
Addition,  
Ramsey County,  
Minnesota.



*o denotes iron pipe monument.*