

FROM THE OFFICE OF

CHARLES O. GEORGI COMPANY

2215 West County Road B

Saint Paul, Minnesota 55113

REGISTERED CIVIL ENGINEER AND LAND SURVEYOR

Certificate of Survey

Project No. Minn A-1-7
Parcel No. 174-A & 174-C
Area. 9453 Sq. Ft., m.o.L.

I Hereby Certify that this plat shows a survey made by me of the property described on this plat, and that the corners are correctly placed as shown, and that all locations have been correctly shown.

Added house location 10/11/74 to
Parcel 174 A. C.O. Georgi

Surveyed For Housing Authority

Date March 1974

Scale 1"=40'

By Charles O. Georgi
REGISTERED LAND SURVEYOR

Description:

Parcel 174-C

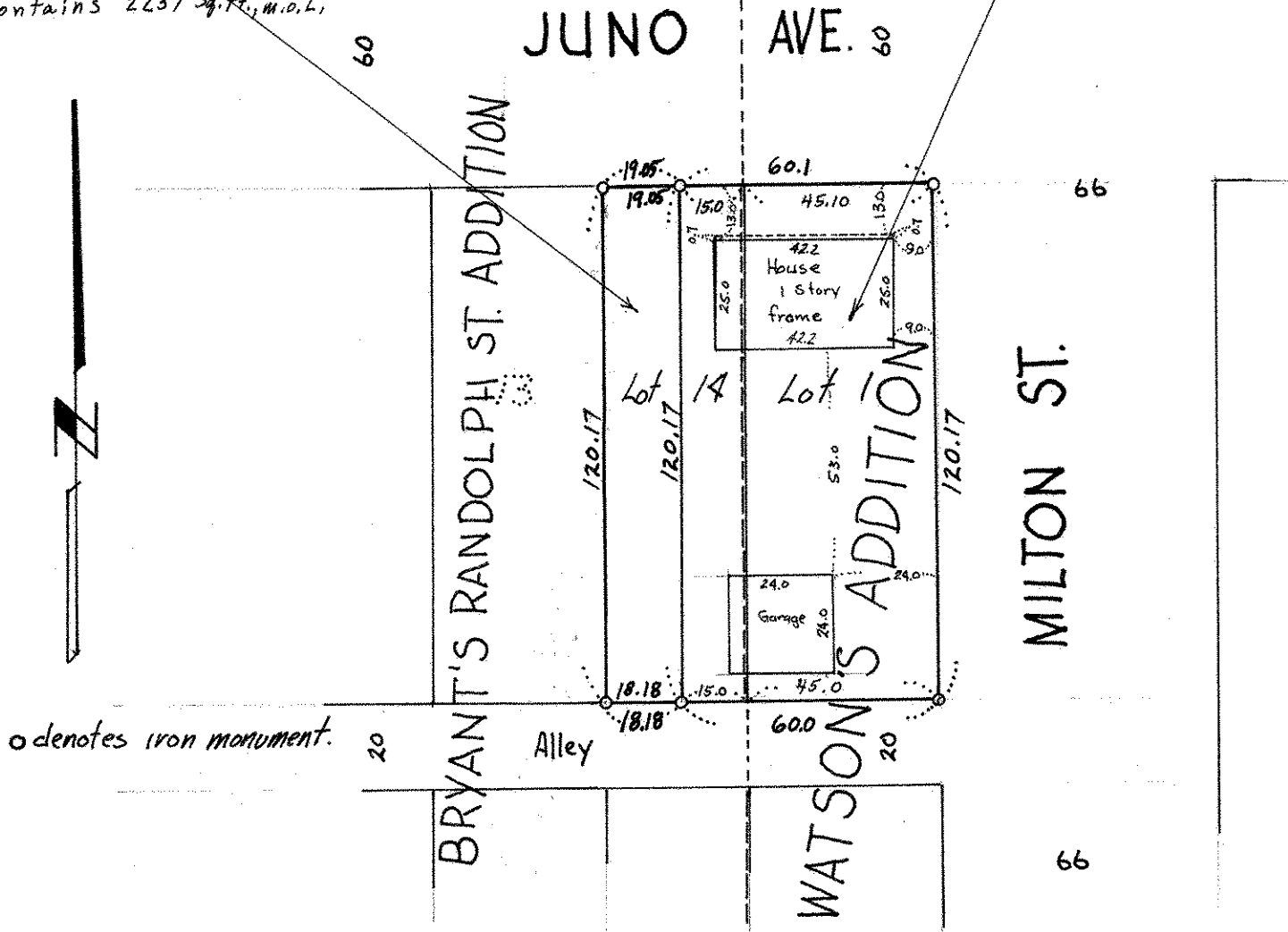
Lot 14, Block 2, except the
East 15.0 feet thereof,
Bryant's Randolph St. Addition,
Ramsey County,
Minnesota.

Contains 2237 Sq. Ft., m.o.L.

Description 174-A

Lot 1, Block 7, Watson's Addition
and the East 15.0 feet of
lot 14, Block 2, Bryant's Randolph
St. Addition, Ramsey County,
Minnesota.

Contains 7216 Sq. Ft., m.o.L.



o denotes iron monument.