

FROM THE OFFICE OF

CHARLES O. GEORGI COMPANY

2215 West County Road B

Saint Paul, Minnesota 55113

REGISTERED CIVIL ENGINEER AND LAND SURVEYOR



**Certificate
of Survey**

I Hereby Certify that this plat shows a survey made by me of the property described on this plat, and that the corners are correctly placed as shown, and that all locations have been correctly shown.

Project No. - Minn. A-1-7
Parcel No. - 147-A
Area - 5077 Sq. Ft.

Surveyed For Housing Authority

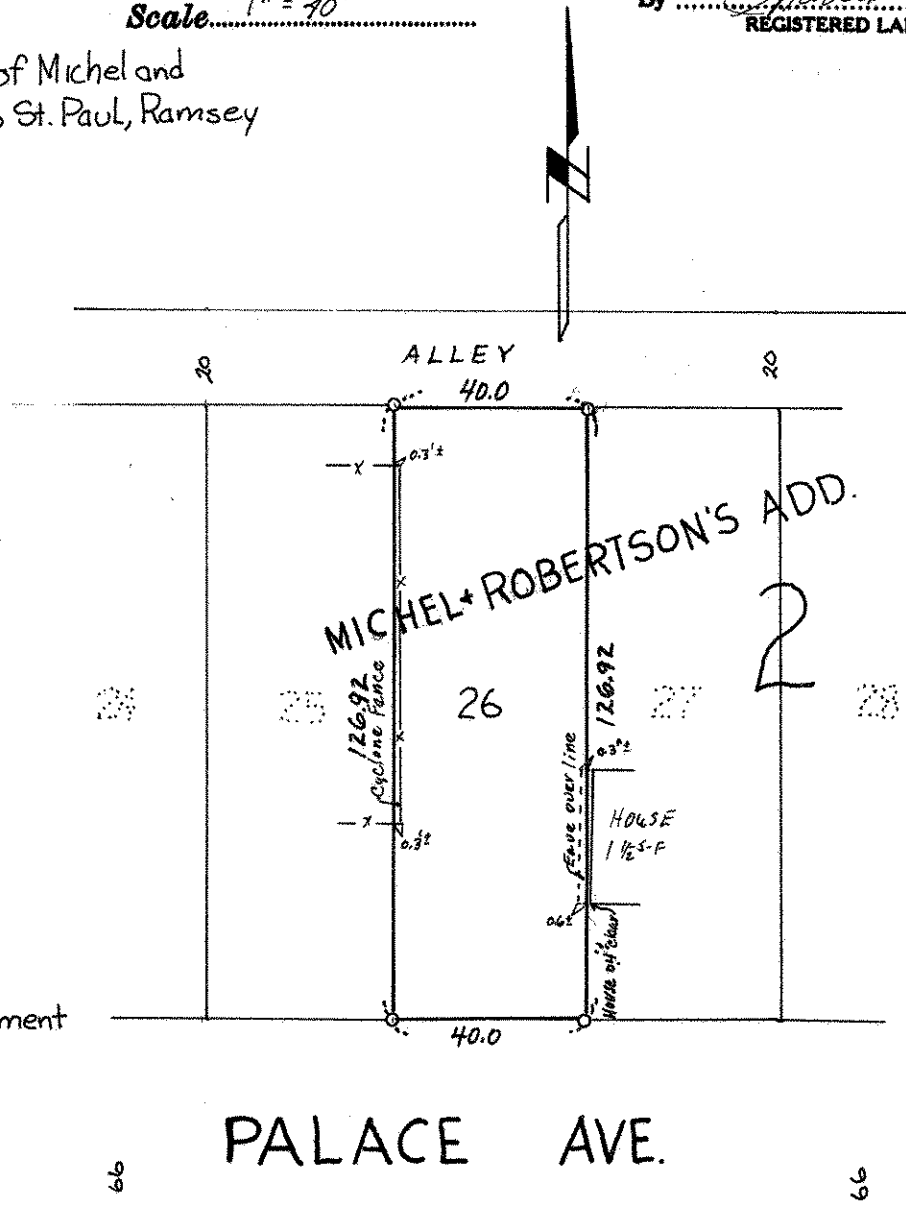
Date January 1973

Scale 1" = 40'

By Charles O. Georgi
REGISTERED LAND SURVEYOR

937 Palace Ave
Description:

Lot 26, of Block 2 of Michel and
Robertson's Addition to St. Paul, Ramsey
County, Minnesota.



o Denotes iron monument