

N.E. 11, 28, 23

FROM THE OFFICE OF

CHARLES O. GEORGI COMPANY

2215 West County Road B

Saint Paul, Minnesota 55113

REGISTERED CIVIL ENGINEER AND LAND SURVEYOR

Certificate of Survey

I Hereby Certify that this plat shows a survey made by me of the property described on this plat, and that the corners are correctly placed as shown, and that all locations have been correctly shown.

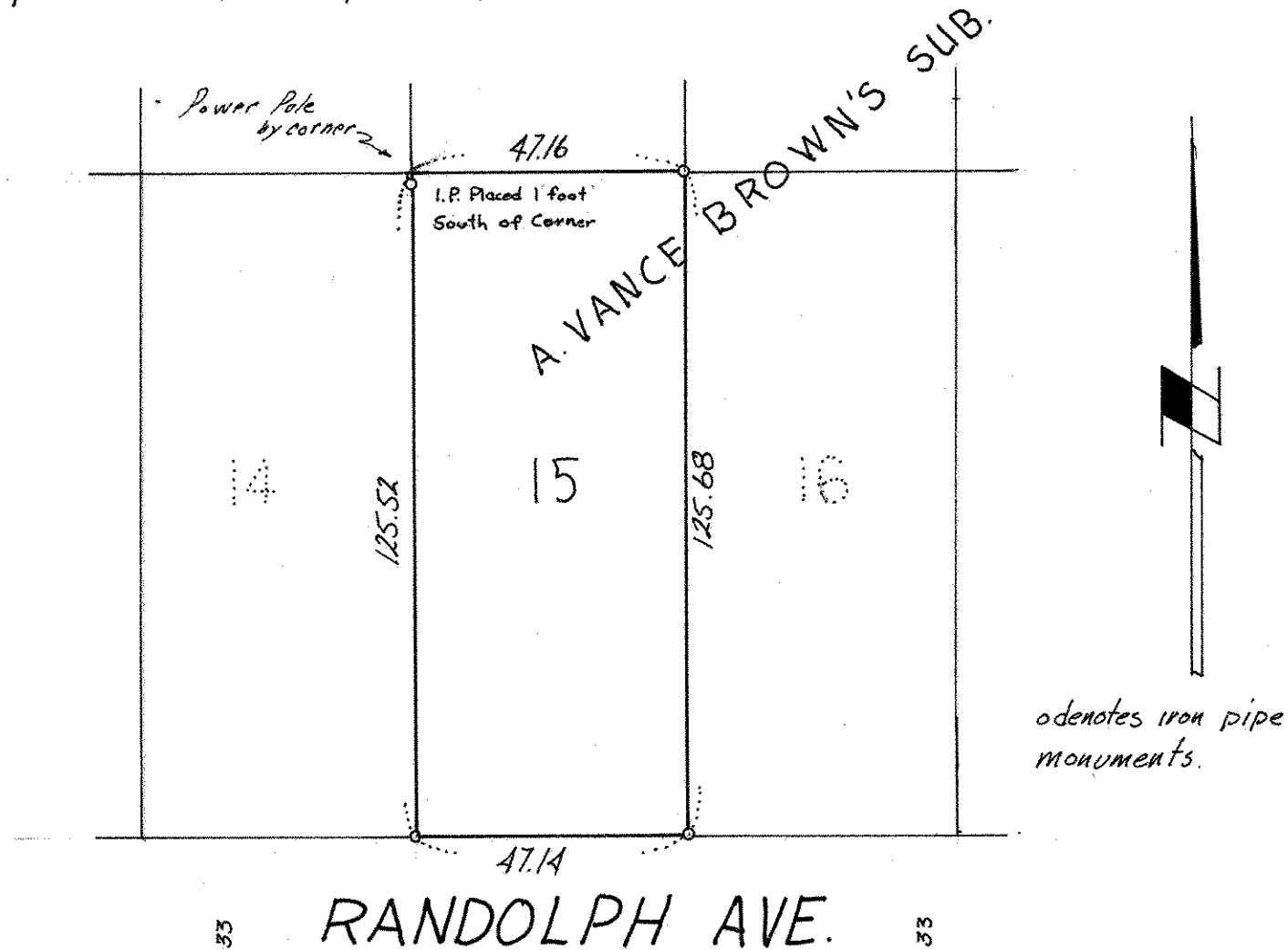
Project No Minn. A-1-7
Parcel No. 157-A
Area. 5922 sqft. m.o.l.

Surveyed For Housing Authority
Date April 1973
Scale 1" = 30'

By Charles O. Georgi
REGISTERED LAND SURVEYOR

Description:

Lot 15, Block 32, A Vance Brown's Subdivision
of Stinson, Brown and Ramsey's addition to the
City of St. Paul, Ramsey County, Minnesota.



↳ South line of NE 1/4 of Section 11, T28, R23