

FROM THE OFFICE OF

# CHARLES O. GEORGI COMPANY

2215 West County Road B

Saint Paul, Minnesota 55113

REGISTERED CIVIL ENGINEER AND LAND SURVEYOR

## Certificate of Survey

I Hereby Certify that this plat shows a survey made by me of the property described on this plat, and that the corners are correctly placed as shown, and that all locations have been correctly shown.

Project No. Minn A-1-7  
Parcel No 61-D  
Area. 2,921 sqft. m.o.l

Surveyed For *Housing Authority*  
Date *October 1973*  
Scale *1" = 40'*

By *Charles O. Georgi*  
REGISTERED LAND SURVEYOR

**Description:**

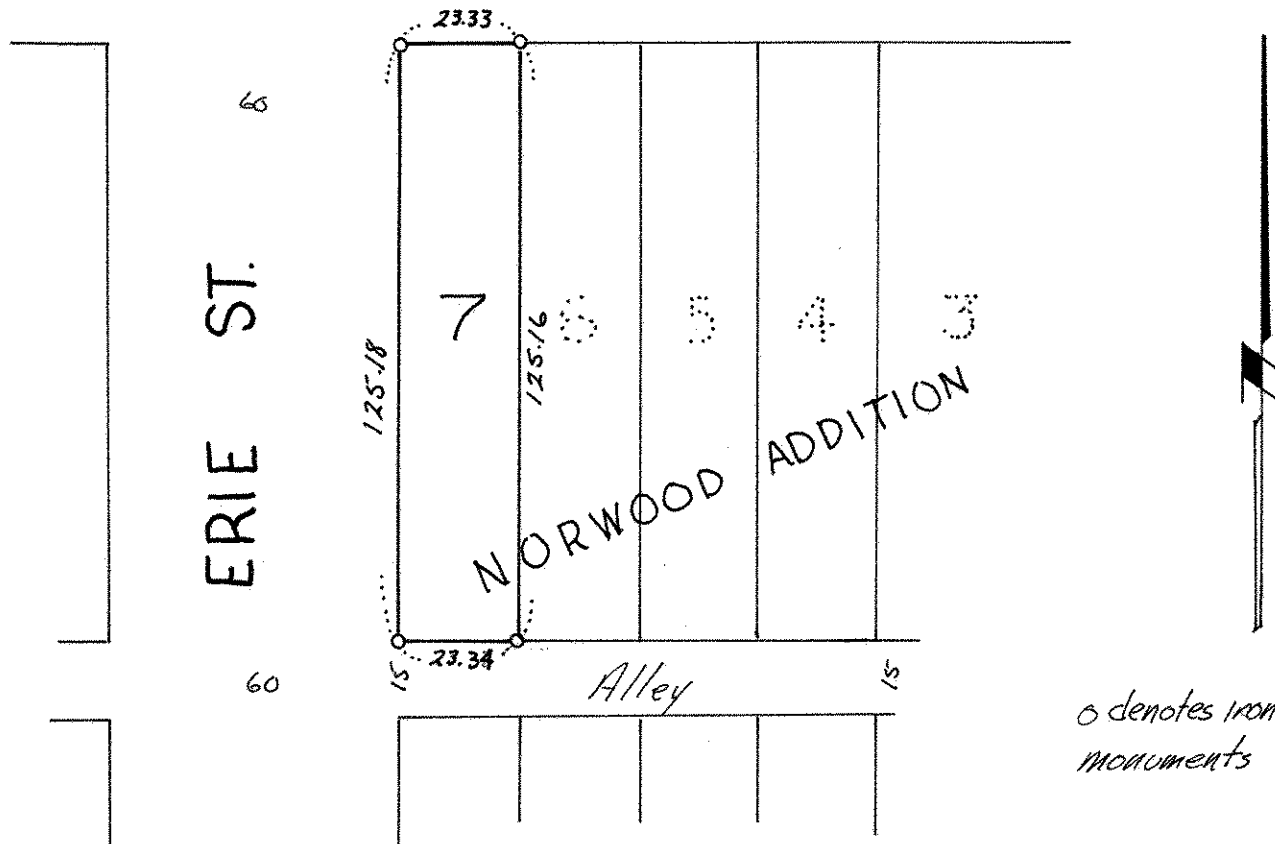
Lot- 7,  
Block 7,  
Norwood Addition to St. Paul  
Ramsey County,  
Minnesota.



SUPERIOR AVE.

66

66



o denotes iron pipe  
monuments