

FROM THE OFFICE OF

CHARLES O. GEORGI COMPANY

2215 West County Road B

Saint Paul, Minnesota 55113

REGISTERED CIVIL ENGINEER AND LAND SURVEYOR

**Certificate
of Survey**

Project No. Minno A-1-7

Parcel No. 59A

Area, 6766 sq. ft. mo. 1

I Hereby Certify that this plat shows a survey made by me of the property described on this plat, and that the corners are correctly placed as shown, and that all locations have been correctly shown. ^{6/28/74 Added record lot data.}

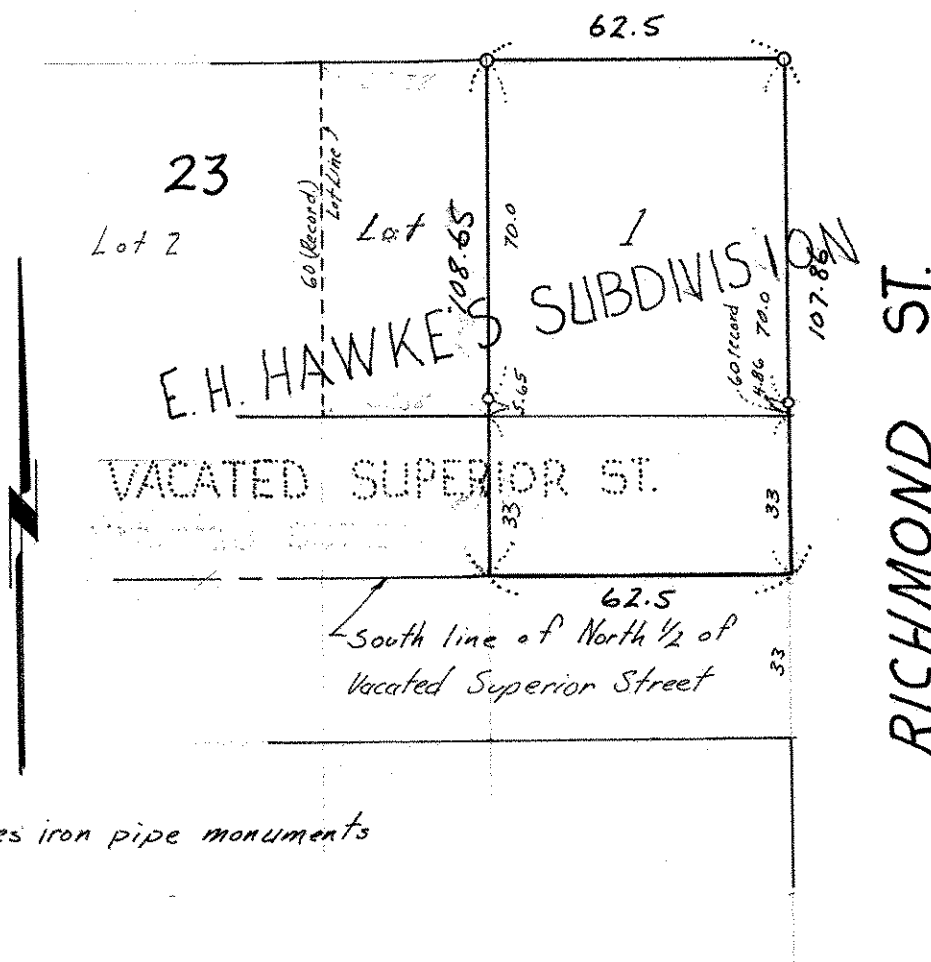
Surveyed For ^{Housing Authority and} Crown Construction

Date ^{July} 1974Scale ^{1" = 40'}

By *Charles O. Georgi*
REGISTERED LAND SURVEYOR

Description:

The East 62.5 feet of Lots 1 thru 6, Block 23, and the North 1/2 of the adjoining vacated Superior St.,
E. H. Hawke's Subdivision,
Ramsey County, Minnesota.

GOODHUE ST.

o denotes iron pipe monuments