

FROM THE OFFICE OF

CHARLES O. GEORGI COMPANY

2215 West County Road B

Saint Paul, Minnesota 55113

REGISTERED CIVIL ENGINEER AND LAND SURVEYOR

**Certificate
of Survey**

I Hereby Certify that this plat shows a survey made by me of the property described on this plat, and that the corners are correctly placed as shown, and that all locations have been correctly shown.

Project No. Minn. A-1-1
Parcel No. 174-B
Area 6000 sq. ft. m.o.l.

Surveyed For Housing Authority

Date November 1975

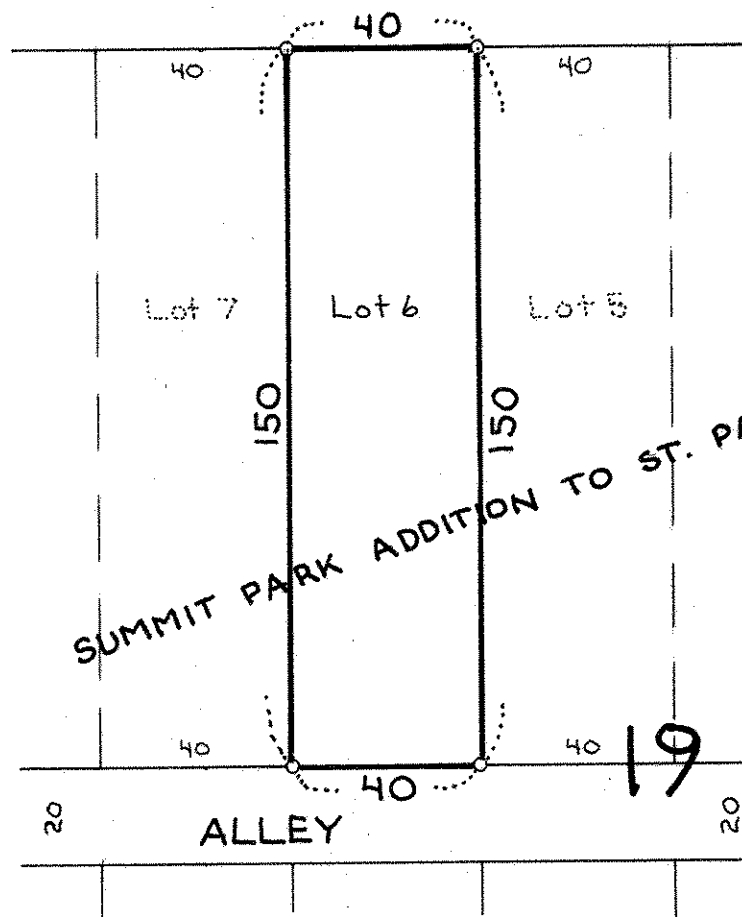
Scale 1" = 40'

By *Charles O. Georgi*
REGISTERED LAND SURVEYOR

Description:

Lot 6,
Block 19,
Summit Park Addition to St. Paul,
Ramsey County, Minn.

66 LAUREL AVENUE 66



o Denotes iron pipe monument