

FROM THE OFFICE OF

**CHARLES O. GEORGI COMPANY**

2215 West County Road B

Saint Paul, Minnesota 55113

REGISTERED CIVIL ENGINEER AND LAND SURVEYOR

**Certificate  
of Survey**

I Hereby Certify that this plat shows a survey made by me of the property described on this plat, and that the corners are correctly placed as shown, and that all locations have been correctly shown.

Project No Minn A-1-1  
Parcel No 163A 163-A2  
Area 19,384 sq. ft. m.o.l. 2,768 sq. ft. m.o.l.

Surveyed For Housing Authority

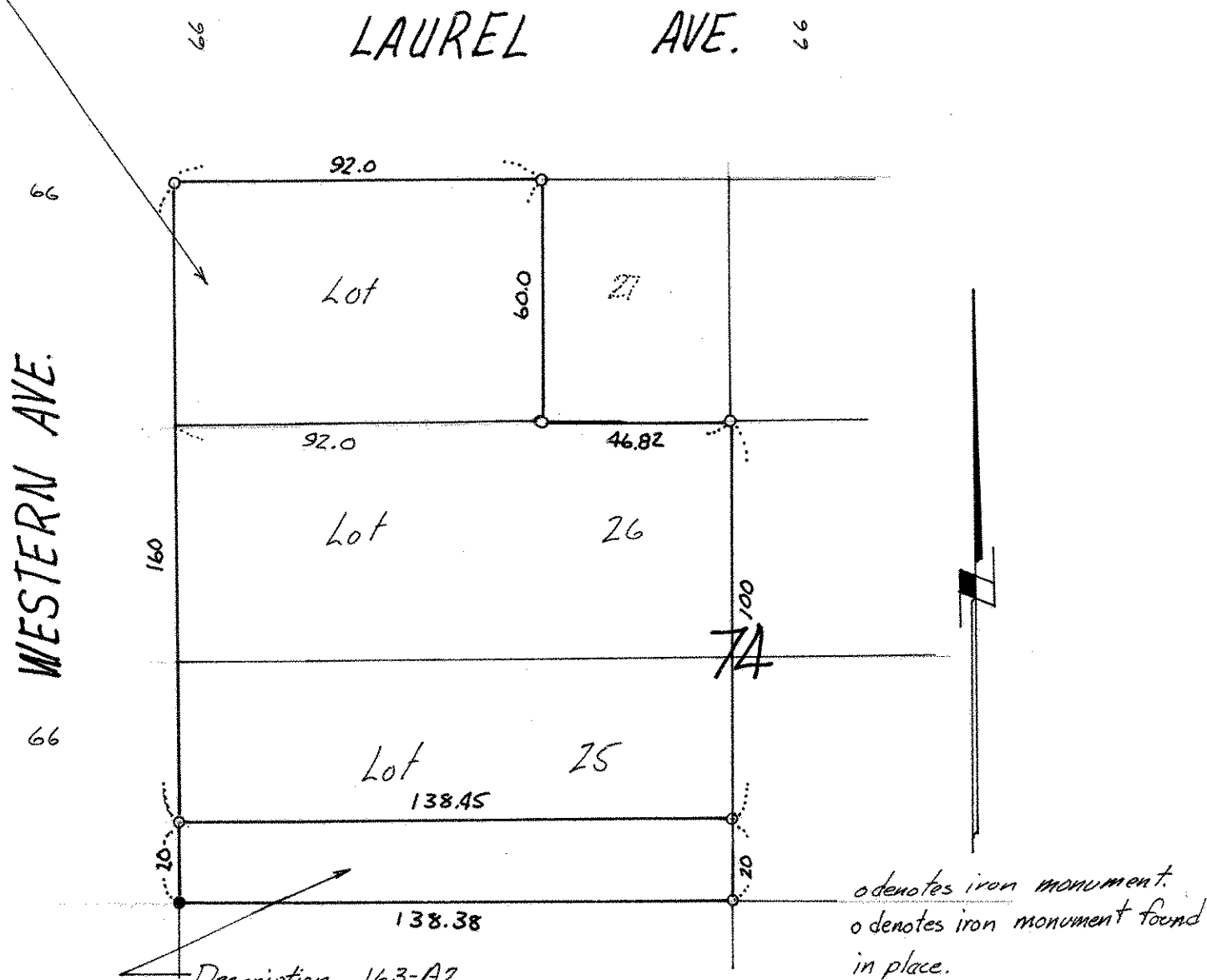
Date April 1974

Scale 1" = 40'

By Charles O. Georgi  
REGISTERED LAND SURVEYOR

Description: 163-A

lot 26 and 25, except the South 20 feet thereof, and the West 92 feet of lot 27,  
Block 74, Dayton and Irvine's Addition to St. Paul, Ramsey County, Minnesota.



Description 163-A2

The South 20 feet of lot 25, Block 74, Dayton and Irvine's Addition to St. Paul, Ramsey County, Minnesota.