

FROM THE OFFICE OF

CHARLES O. GEORGI COMPANY

2215 West County Road B

Saint Paul, Minnesota 55113

REGISTERED CIVIL ENGINEER AND LAND SURVEYOR

Certificate of Survey

I Hereby Certify that this plat shows a survey made by me of the property described on this plat, and that the corners are correctly placed as shown, and that all locations have been correctly shown.

Project No. Minn A-1-1
Parcel No. 131-B
Area. 3,516 sq.ft. m.o.l.

Surveyed For *Housing Authority*

Date *September 1973*

Scale *1" = 40'*

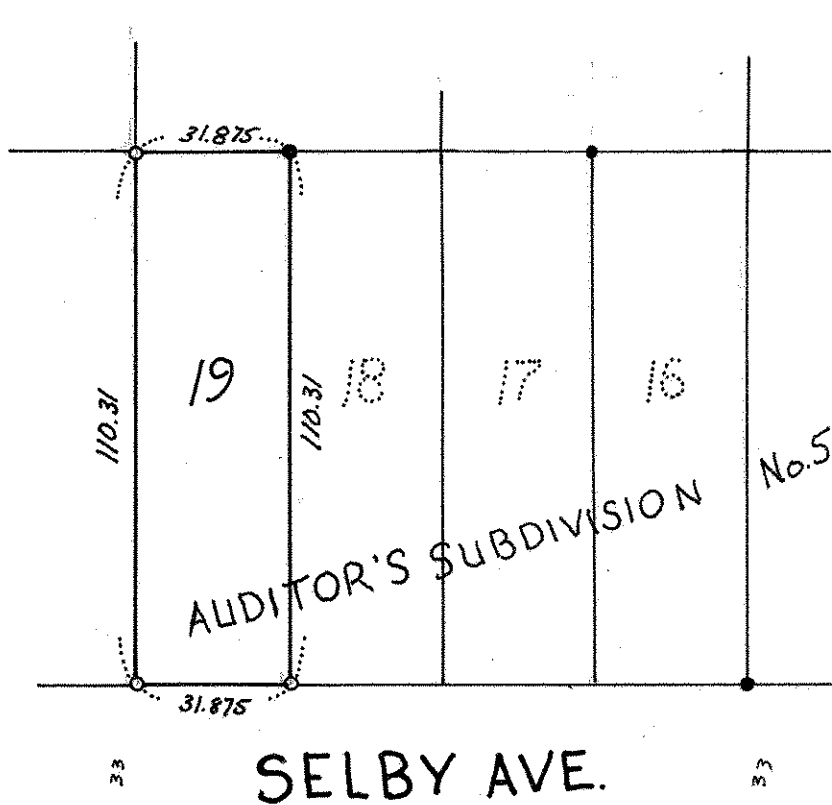
By

Charles O. Georgi

REGISTERED LAND SURVEYOR

Description:

Lot 19, "Selby Block St. Paul Minn. being Auditor's Subdivision No. 5," Ramsey County, Minnesota.



o denotes iron pipe monument.
• denote iron pipe monuments found in place.