

FROM THE OFFICE OF

**CHARLES O. GEORGI COMPANY**

2215 West County Road B

Saint Paul, Minnesota 55113

REGISTERED CIVIL ENGINEER AND LAND SURVEYOR

**Certificate  
of Survey**

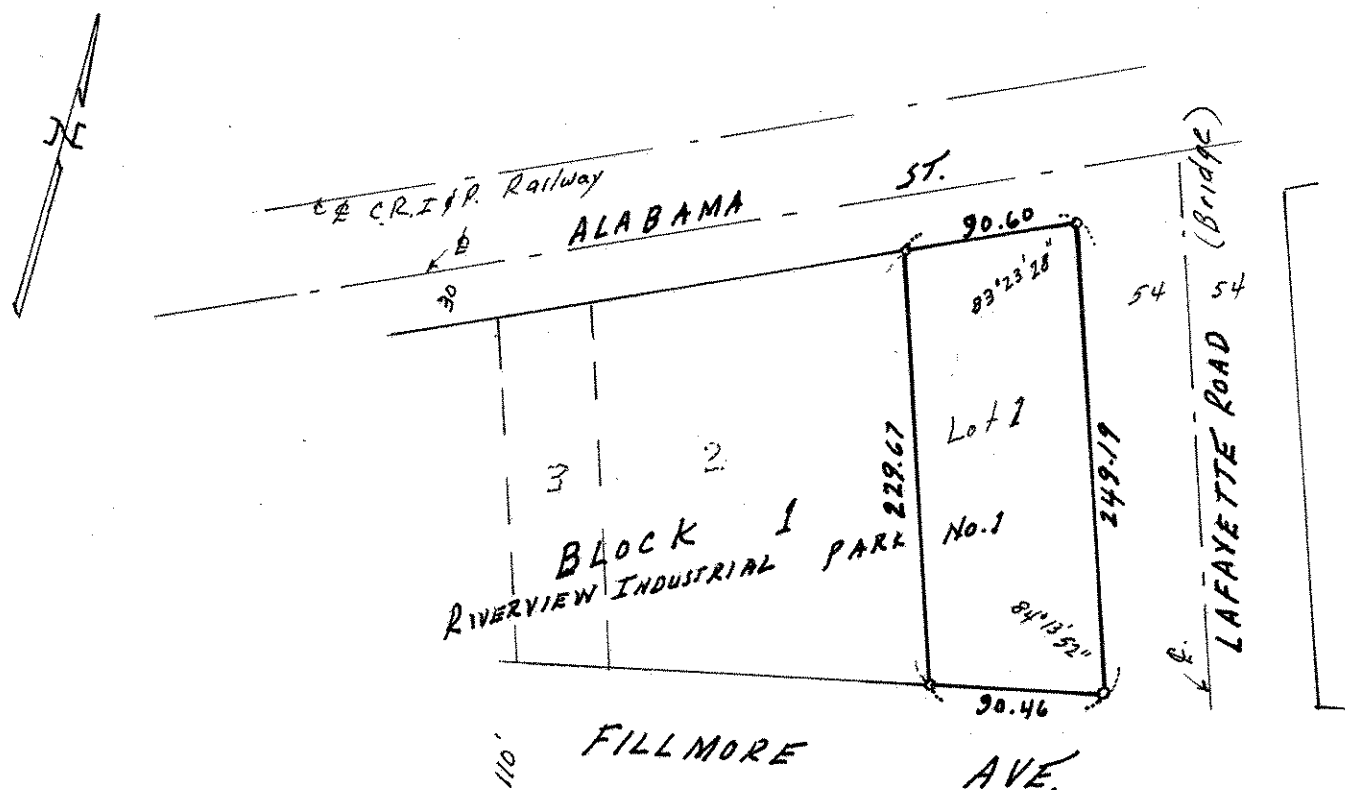
I Hereby Certify that this plat shows a survey made by me of the property described on this plat, and that the corners are correctly placed as shown, and that all locations have been correctly shown.

Surveyed For Port AuthorityDate July 1973Scale 1" = 100'

By Charles O. Georgi  
REGISTERED LAND SURVEYOR

**Description:**

Lot 1, Block 1,  
Riverview Industrial Park  
according to the plat on file and of record in the office  
of Register of Deed in and for Ramsey County, Minn  
contains 21,549 Sq. Ft.; m.l.



o Denotes Iron Monument.