

FROM THE OFFICE OF

CHARLES O. GEORGI COMPANY

2215 West County Road B

Saint Paul, Minnesota 55113

REGISTERED CIVIL ENGINEER AND LAND SURVEYOR

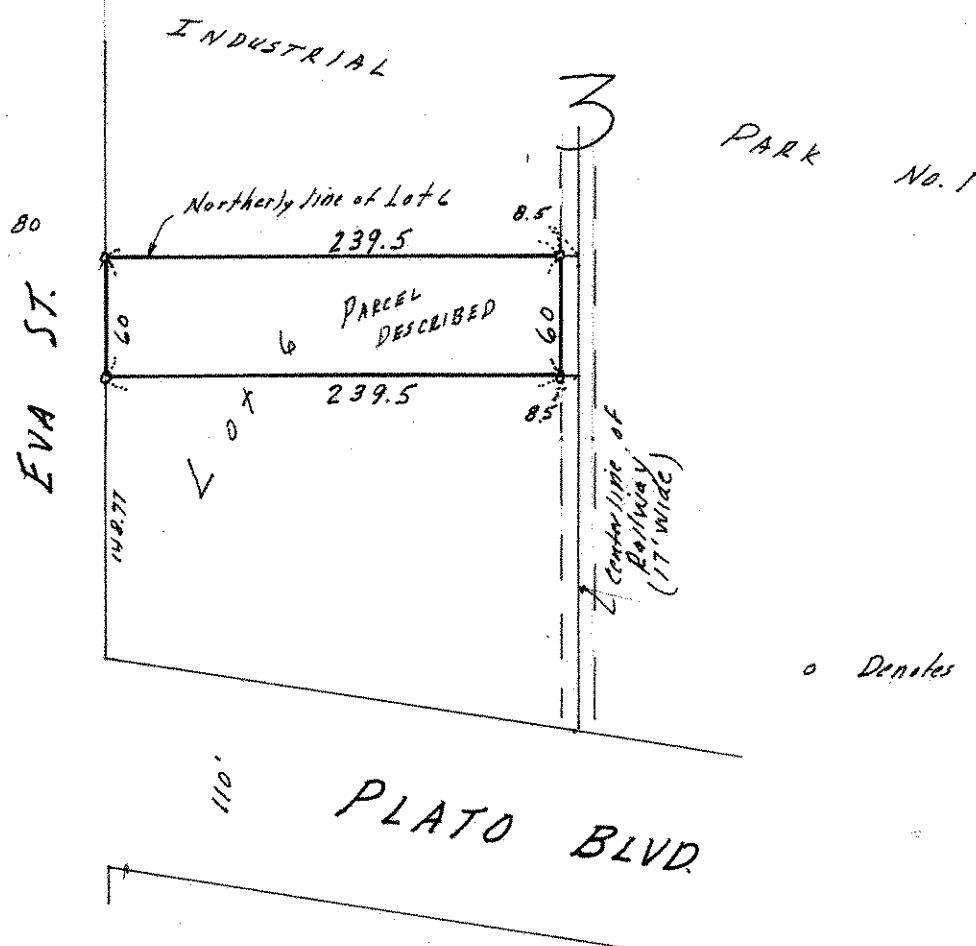
**Certificate
of Survey**

I Hereby Certify that this plat shows a survey made by me of the property described on this plat, and that the corners are correctly placed as shown, and that all locations have been correctly shown.

Surveyed For Port AuthorityDate 6/29/71Scale 1" = 100'By Charles O. Georgi
REGISTERED LAND SURVEYOR**Description:**

The Northerly 60 feet of Lot 6, Block 3
Riverview Industrial Park No. 1, St Paul, Minn
except the Easterly 8.5 feet thereof.
contains 14,370 Sq. Ft, more or less.

RIVERVIEW



o Denotes Iron Pipe Monument.