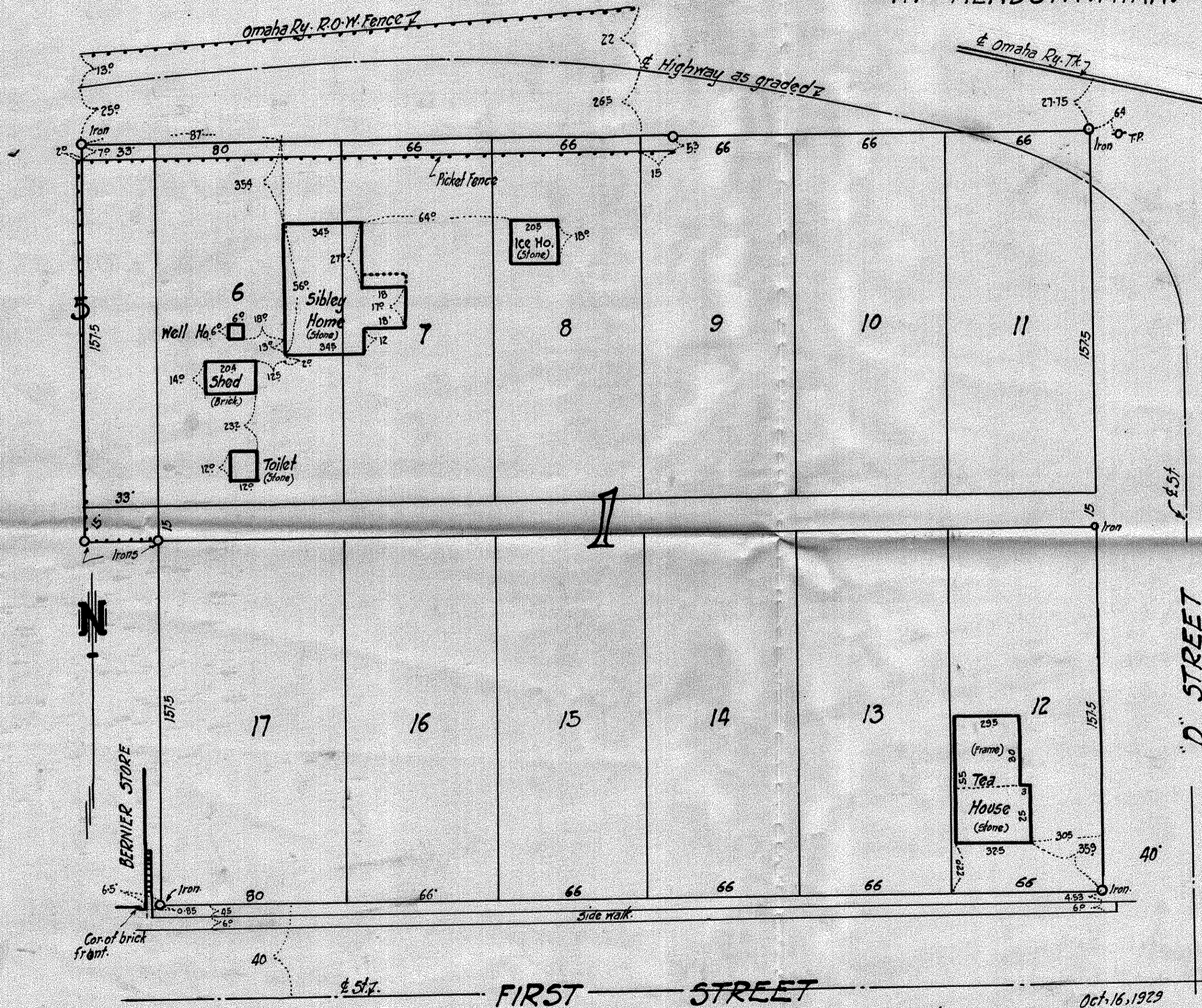


File-27-28-23

PLAT OF SIBLEY HOUSE PROPERTY AT MENDOTA, MINN.



E 1/2 Lot 3 and Lots 6 to 17 incl.
Block-1, in Original Town of Mendota
Dakota County, Minn.

Survey by
P.R. Danister
Consulting Engineer
69-7th Ave - North St. Paul, Minn.
Oct. 16, 1929
Scale - 40' = 1"