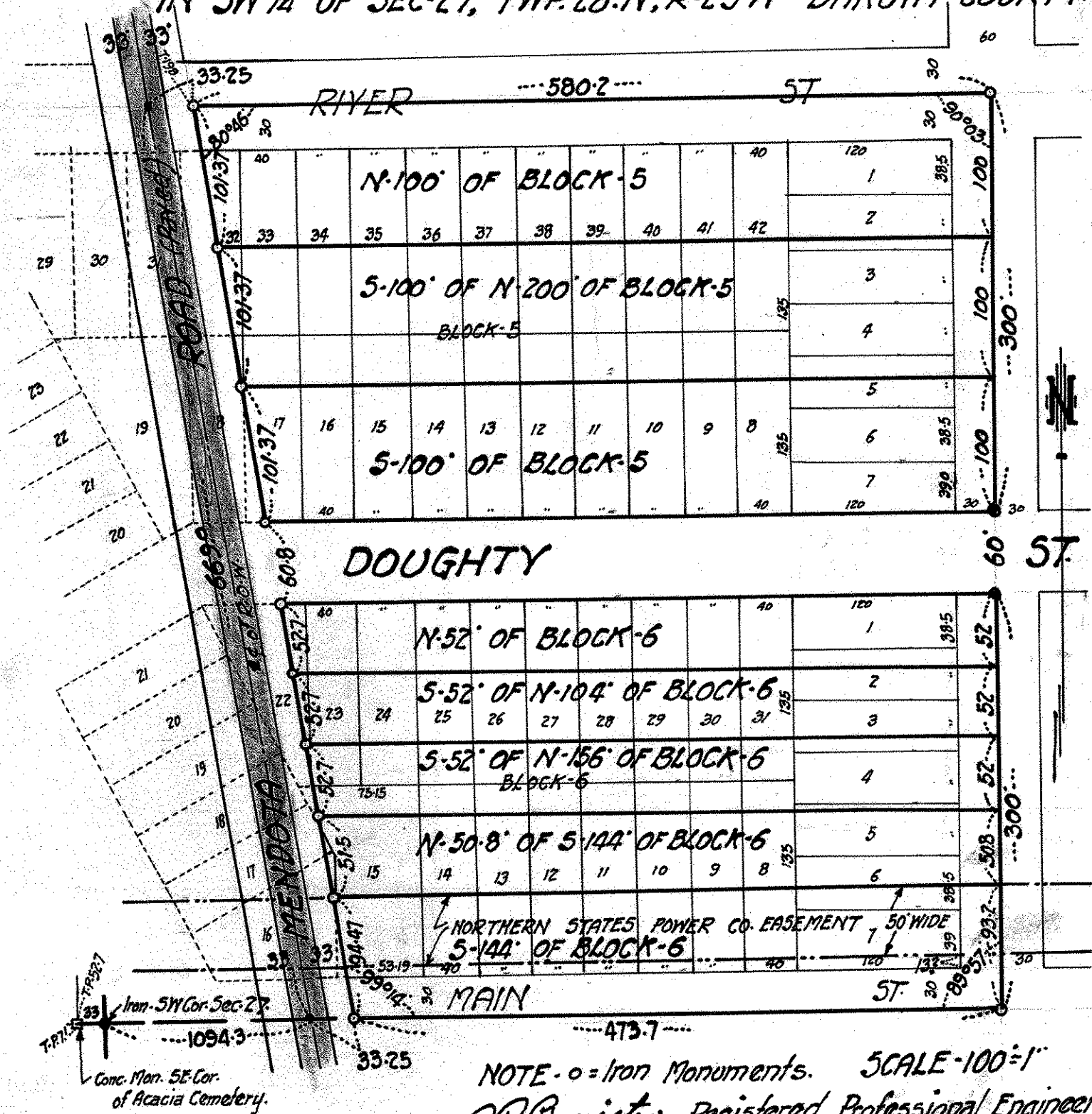


MID-WEST - SUBURBAN REARRANGEMENT
 OF
 THE PORTIONS OF BLOCKS 5 AND 6 OF ADELIA
 TAYLOR'S ADD. LYING E. OF MENDOTA ROAD
 IN SW 1/4 OF SEC-27, TWP. 28. N., R-23-W DAKOTA COUNTY.



Iron SW Cor. Sec. 27
 Conc. Mon. SE Cor.
 of Acacia Cemetery.

JAN. 22. 1929

NOTE - o = Iron Monuments. SCALE - 100 = 1"
 P. R. Cameron - Registered Professional Engineer
 69-7th Ave. North St. Paul, Minn. Phone - 407.

SEC 27-28-23