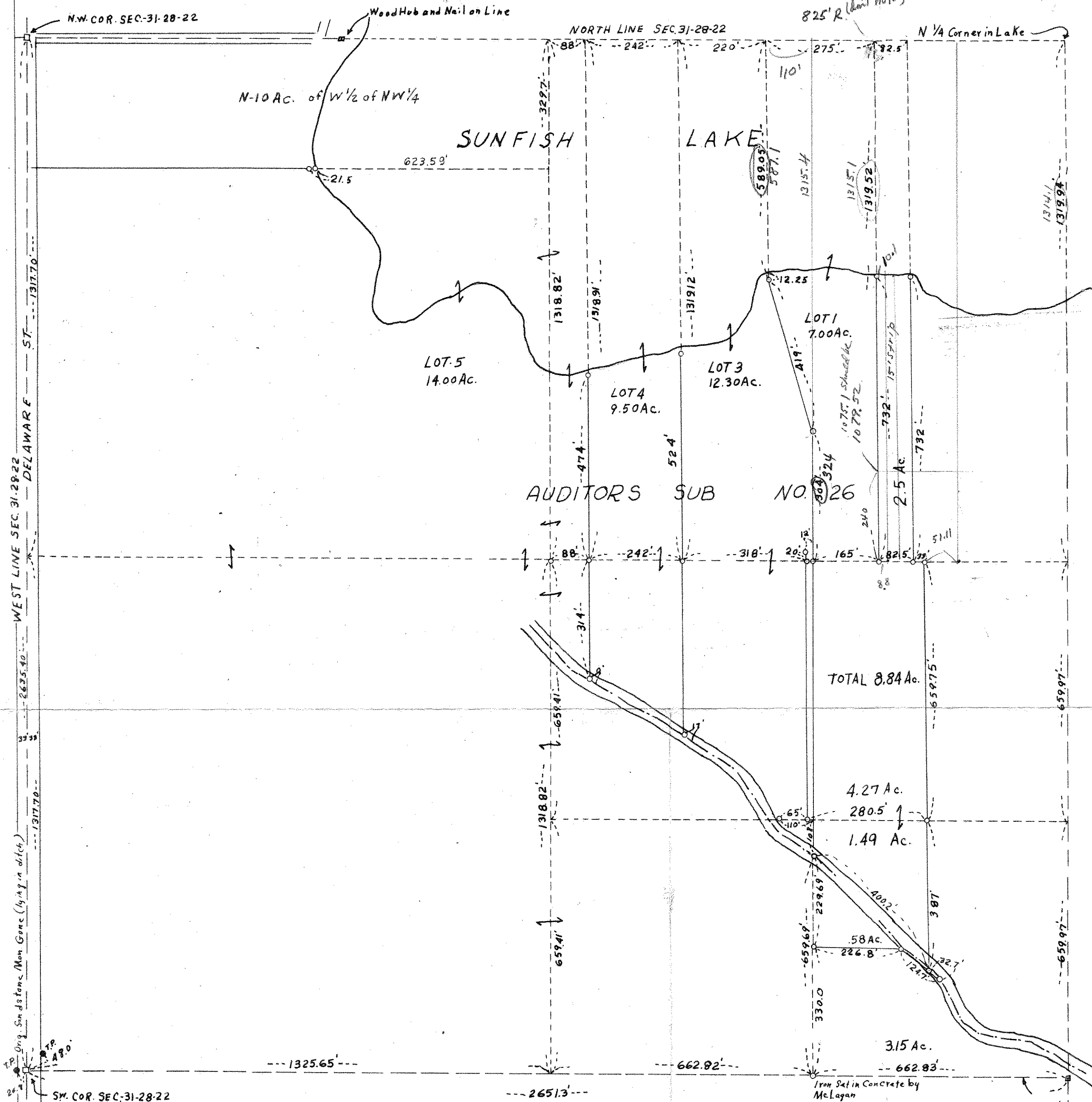


661.7
165
826.7

826.7 (Should be) FILE-31-28-22
825' R. (don't hold)



Burgwald Description
Description overlaps as is

W. 165 feet of the E 1/2 of NE 1/4 of NW 1/4 of Sec 31 and that part of NE 1/4 of NW 1/4 described as follows.

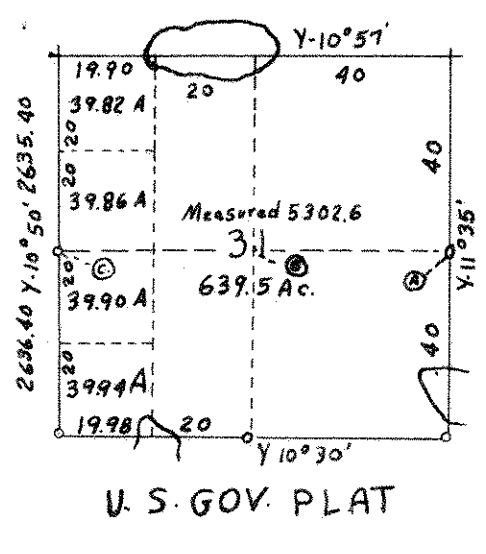
Commencing at a point on the E. line of the W 1/2 of NE 1/4 of NW 1/4 distant 324.0 feet Northerly from the S line of said NE 1/4 of NW 1/4 thence Northerly to said E. line of said section thence ~~W~~ ^{Westerly} to the N line of the NW 1/4 to a point, thence Southerly parallel to said E line 587.1 feet to a point thence Southerly to the pt of beginning.

Use of
Also lot #2
E 12 feet of the NW 1/4 of SE 1/4 of NW 1/4 of said Sec 31
Use of
Beginning of the SE. Cor. Lot 1,
thence E 8.8 feet to 10.10 Sunfish Lake.
(This is OK)

Hence		82.5	166.1
1319.52	1315.1	33.5	115.5
1079.52	240	165	166.61
240	1075.1	331.61	

The E 166.61' of the W 331.61' of the E 1/2 of NE 1/4 of NW 1/4 except the South 240 feet thereof.
Use of (same sold)
15' Strip

Len



Scale 1"=200'

(A) TIES - E 1/4 COR. 31-28-22
Iron Irvine, Tavernier, Forbes, McLagan, Banister.
Twin Oak Triple Elm 20.35'

(B) TIES - W 1/4 COR. 31-28-22
Iron
Replaces Stone Mon. (Removed in grading) Checks ties to Orig. Mon. used by Finnes and Irvine.

(C) TIES - CTR. SEC. 31-28-22
Iron McLagan
Iron - Kulenkamp placed this at spot M. Zander (now dead) told him was used by Forbes and Tavernier as etc in old survey (A bit indefinite and does not check out)

(D) TIES - 1/4 COR. IN CTR. SE 1/4 NW 1/4 SEC. 31-28-22
1/4 Cor. by McLagan
Both these Irons Set by Tavernier on two different surveys as 1/4 Cor. according to J.H. Kulenkamp.

PLAT OF THE
NW 1/4, SEC. 31, T. 28 N., R. 22 W
DAKOTA COUNTY, MINN.

P.R. Banister,
Consulting Engineer
69-Seventh Ave. N.E.
North St. Paul, Minn.
March 29, 1931

(D) TIES - 1/4 COR. IN CTR. SE 1/4 NW 1/4 SEC. 31-28-22
1/4 Cor. by McLagan
Both these Irons Set by Tavernier on two different surveys as 1/4 Cor. according to J.H. Kulenkamp.