

FROM THE OFFICE OF

CHARLES O. GEORGI COMPANY

2215 West County Road B Saint Paul, Minnesota 55113
REGISTERED CIVIL ENGINEER AND LAND SURVEYOR

Certificate of Survey

I Hereby Certify that this plat shows a survey made by me of the property described on this plat, and that the corners are correctly placed as shown, and that all locations have been correctly shown.

Surveyed For Harold Feder

Date December 1973

Scale 1" = 20'

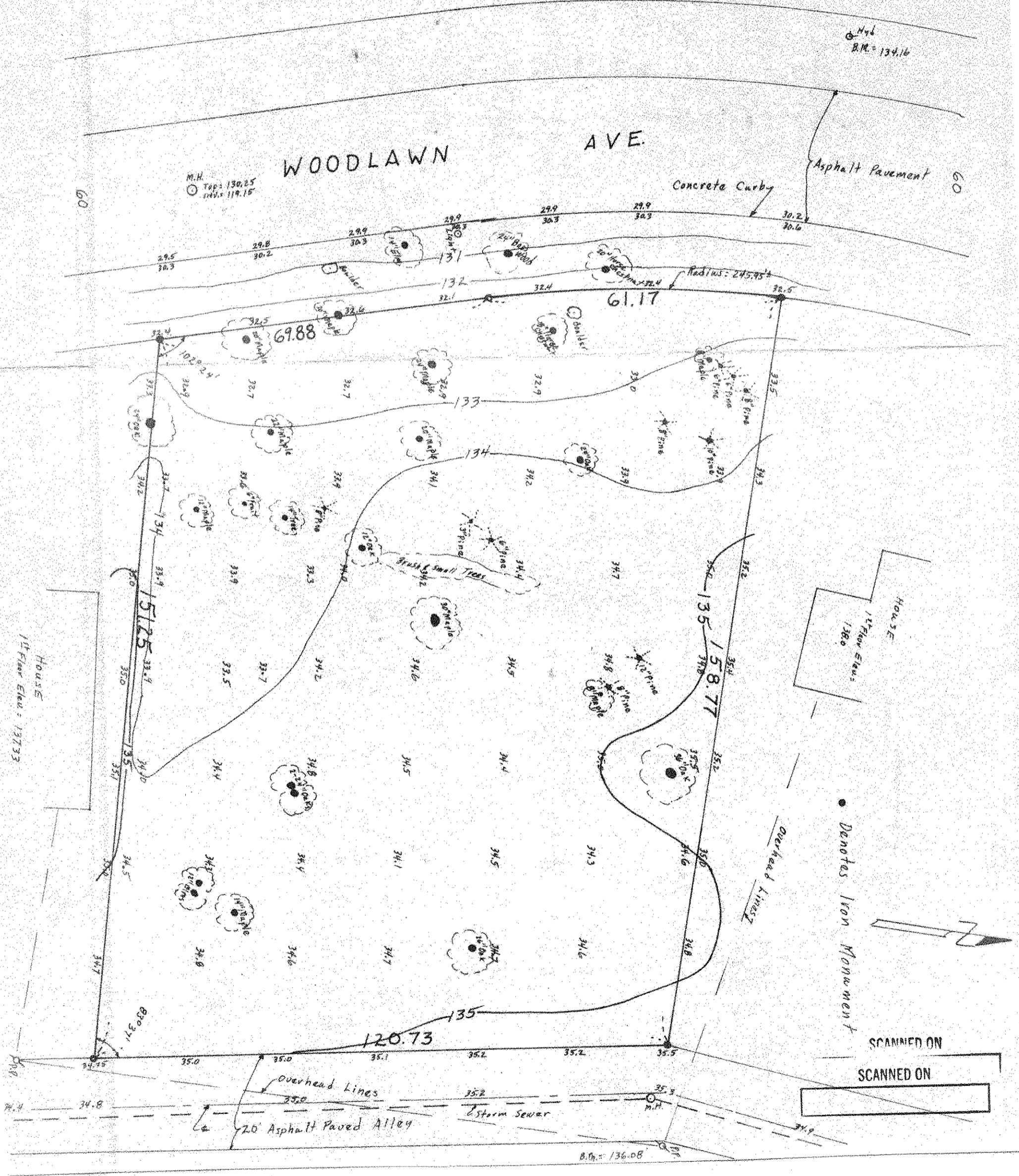
By Charles O. Georgi
REGISTERED LAND SURVEYOR

DESCRIPTION:

Lot 4, Block 1, Woodlawn Addition
Ramsey County, Minnesota

NOTES:

Elevations are City of St. Paul Datum
Elev. 32.9 denotes Elev. 132.9
B.M. = 134.16 Top Hyd. Near NW corner property (as shown)
B.M. = 136.08 Small R/L spt. in P.P. NE corner property (as shown)
P.P. Denotes Power Pole
H.H. Denotes Hydrant
M.H. Denotes Man Hole



SCANNED ON
SCANNED ON