

SOUTH 82 ft. LOTS 1 & 2 BLOCK 1.

WOODLAND PARK

ADDITION.

JOHN B. IRVINE, SURVEYOR.

ST. PAUL, MINN.

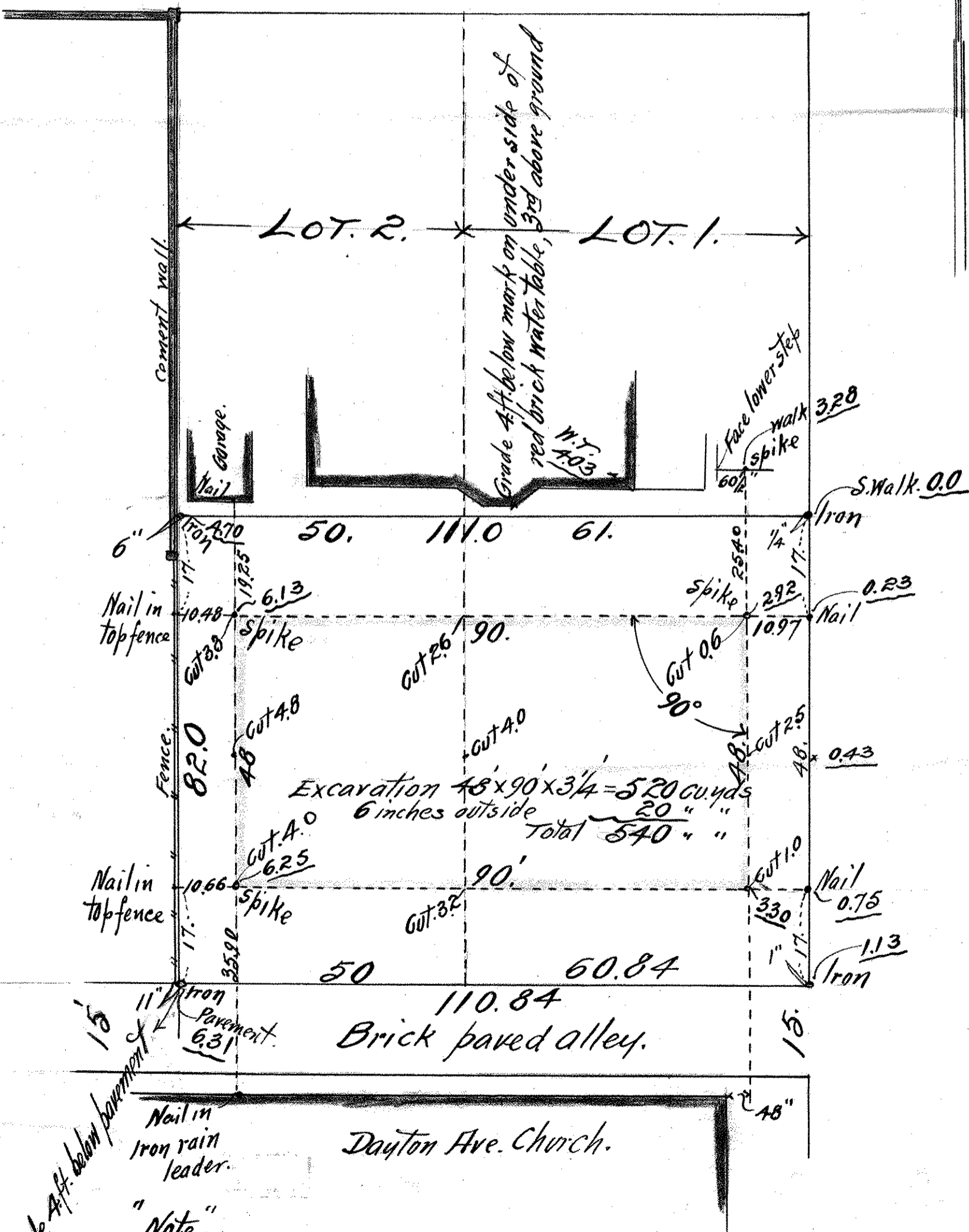
DEC. 6-1915.

SCALE 20 ft. per inch.

MARSHALL AVE.

N

RECORDED
NO 374438



ST. MACHUBIN

Grade 4 ft. below pavement

Nail in Iron rain leader.

"Note"

Figures underlined = Elevations above Sidewalk 0.0 N.E. Cor. S. 82 ft.