

WEST 40ft LOT 9 & EAST 35ft LOT 10

WOODLAND PARK SUB of

BLKS. 19, 21 & PART OF BLK. 20.

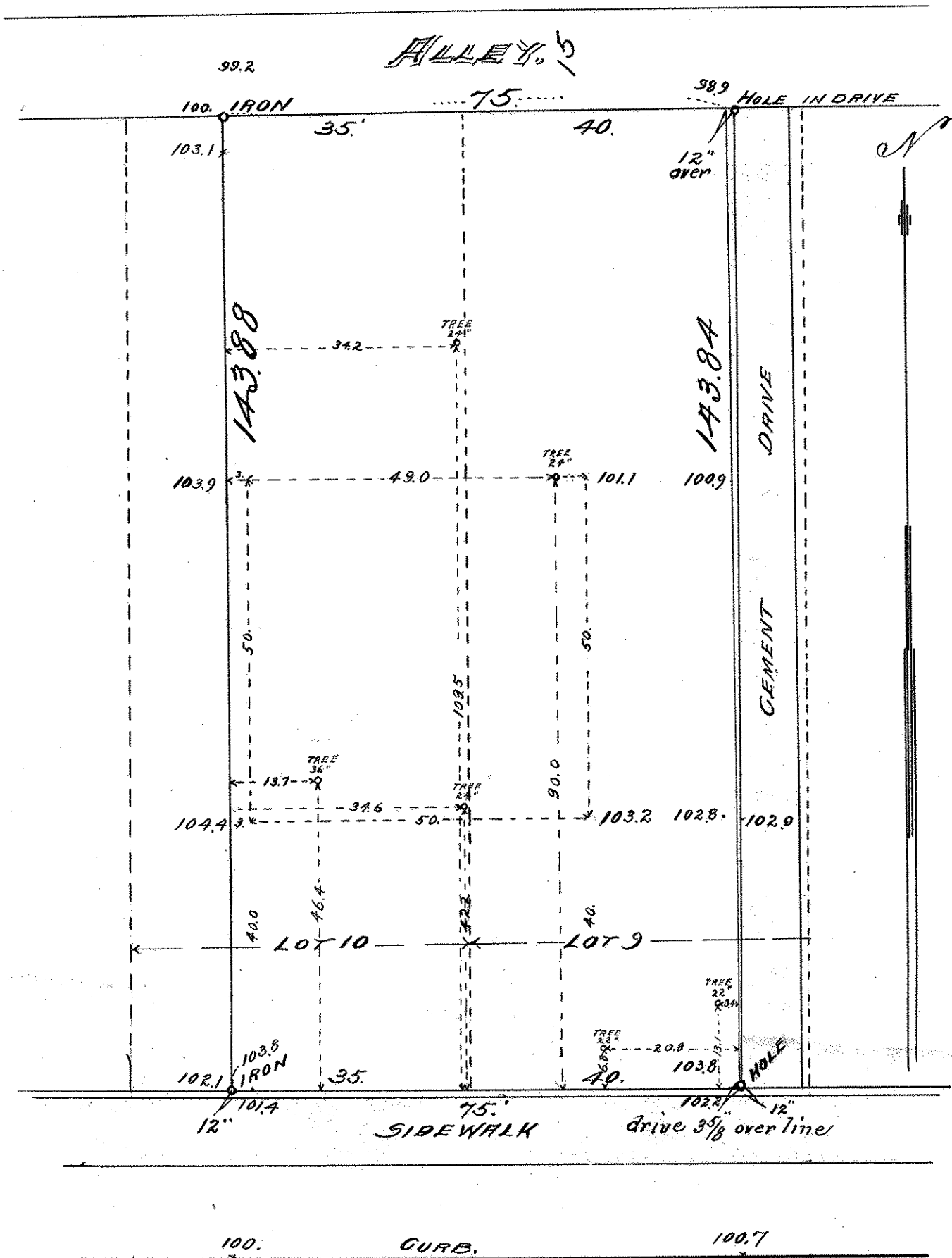
JOHN B. IRVINE SURVEYOR.

416 GLOBE BLD'G.

ST PAUL MINN.

MAY 10-1907

SCALE 20ft. per inch.



RECORDED

SUMMIT AVE.