

DIVISION LINE BETWEEN
PROPERTY OF
JOSEPH SHONKA & ALBERT MASEK.

WHITANE, TURNER & LEPPER SUB,
BLOCK 1.

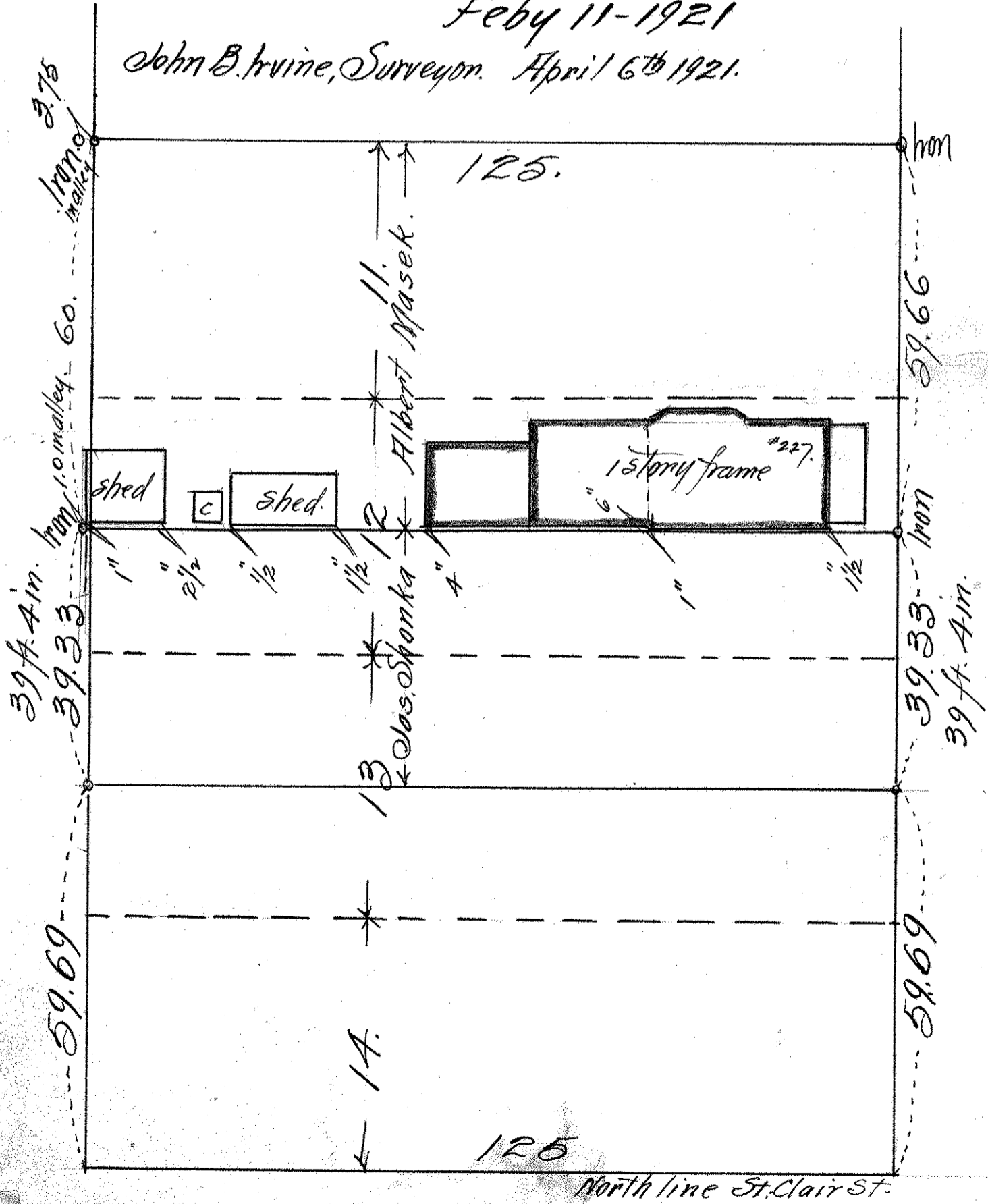
WILLES ADD.

District Court, Ramsey County, Minn.

Feb 11-1921

John B. Irvine, Surveyor. April 6th 1921.

ALLEY 15.



COLBORNE ST.

Scale. 20 ft. per inch.

ST. CLAIR ST.