

Certificate of Survey

From the office of
GEORGI-SCHMIDT & ASSOC. INC.

3092 No. Lexington Ave., Roseville, Mn. 55113

LAND SURVEYING

483-4408

I Hereby Certify that this plat shows a survey made by me of the property described on this plat, and that the corners are correctly placed as shown,

Job Number: 1326

Surveyed For Michels

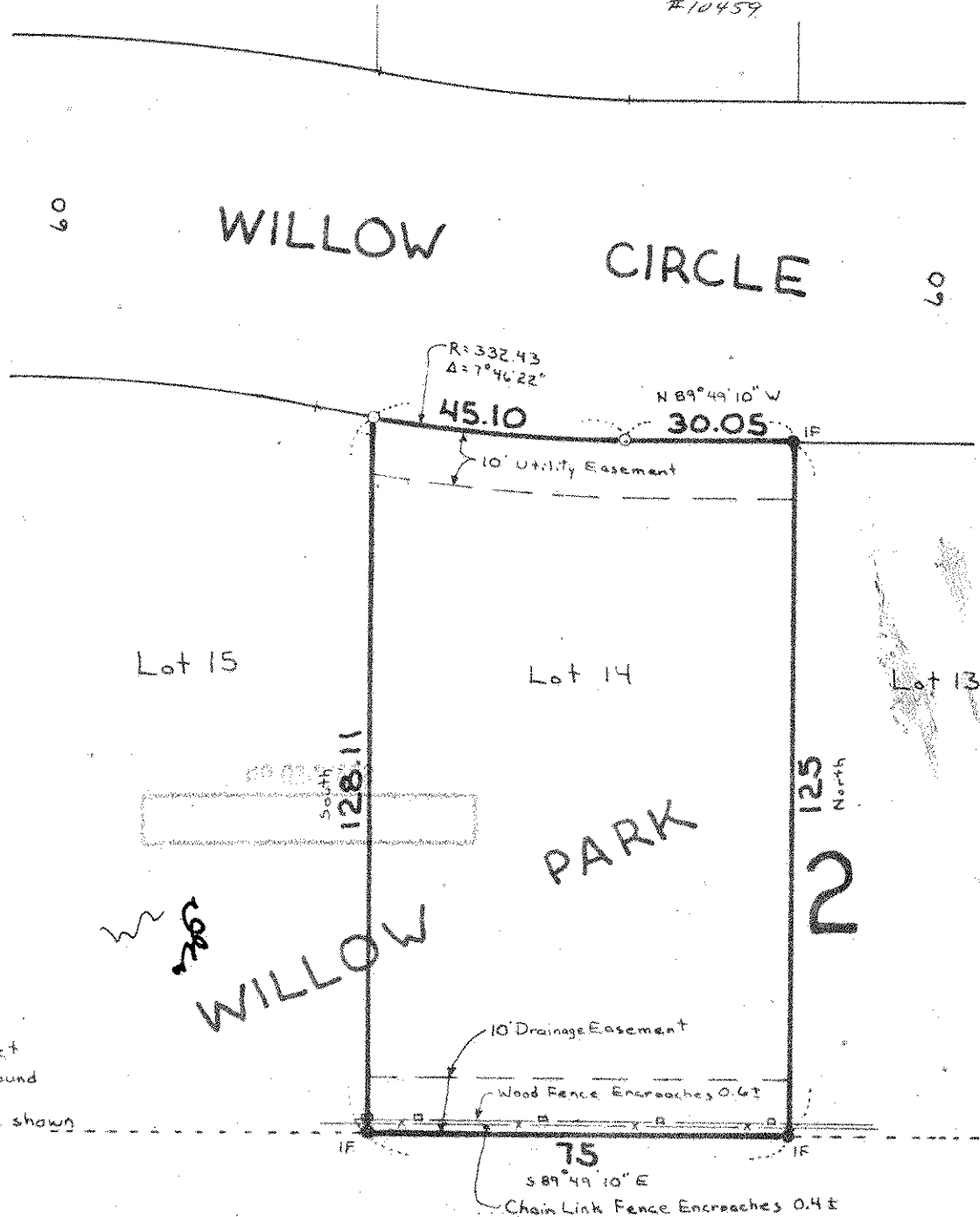
Date February 14, 1983

Scale 1" = 30'

By *Donald W. Schmidt*
REGISTERED LAND SURVEYOR
#10459

Description: (as furnished)

Lot 14
Block 2
Willow Park
Ramsey County, Minn.



notes Iron Pipe Monument set
Iron Pipe Monument found
measurements from plat are shown
are assumed

75
S 89° 49' 10" E
Chain Link Fence Encroaches 0.4 ft