

FROM THE OFFICE OF

# CHARLES O. GEORGI COMPANY

2215 West County Road B

Saint Paul, Minnesota 55113

REGISTERED CIVIL ENGINEER AND LAND SURVEYOR



## Certificate of Survey

I Hereby Certify that this plat shows a survey made by me of the property described on this plat, and that the corners are correctly placed as shown, and that all locations have been correctly shown.

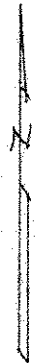
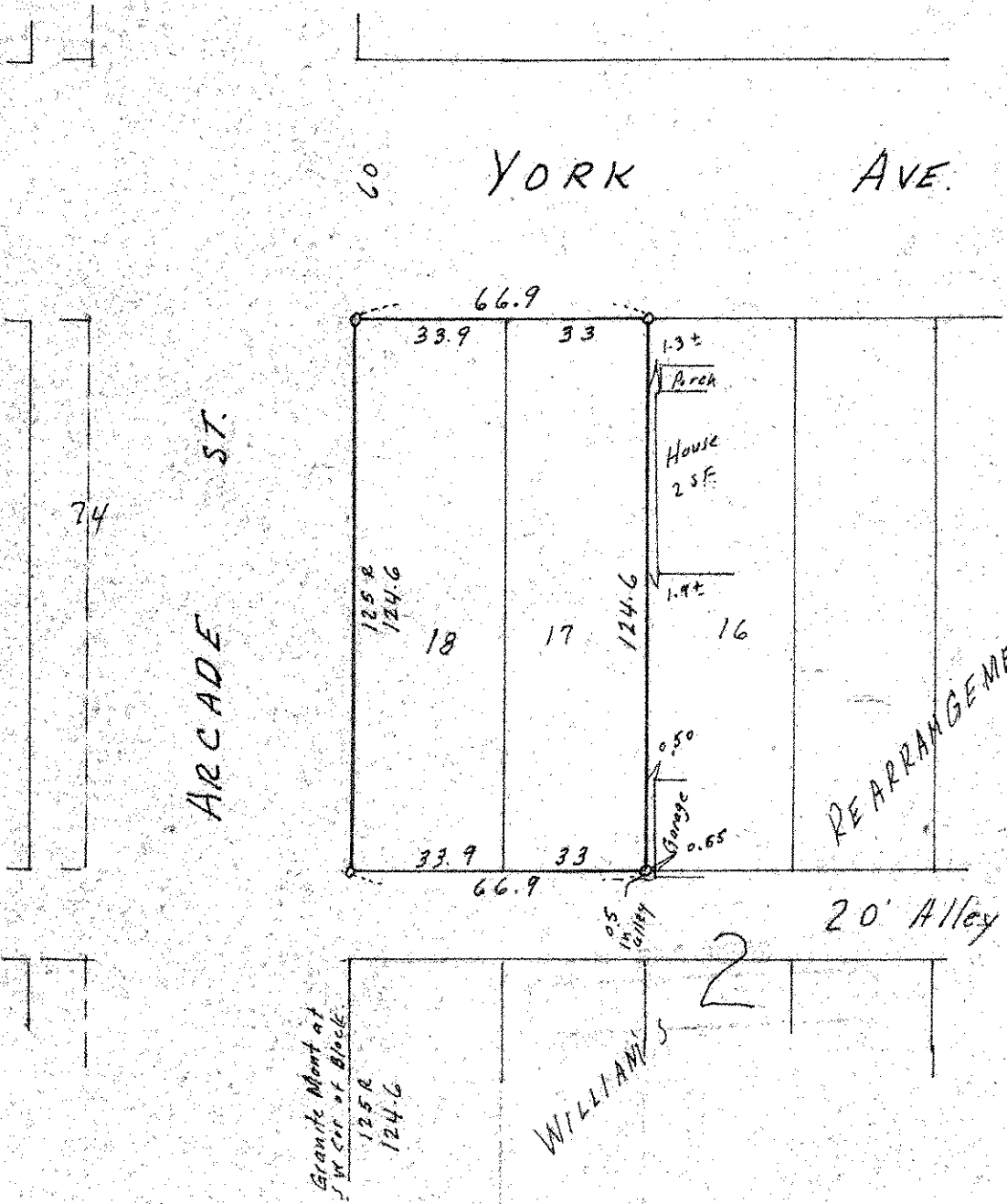
Surveyed For WHIRLPOOL CORP.

Date May 1968

Scale 1" = 40'

By Charles O. Georgi  
REGISTERED LAND SURVEYOR

Description: Lots 17 and 18  
Block 2  
WILLIAMS' REARRANGEMENT OF BLOCK 7  
and PARTS OF BLOCKS OF NELSONS ADDITION



Note:  
There is a 2.0 foot excess in Lot 1 old survey & apparent occupancy used record distances from Arcade.

o Denotes Iron Pipe Monument.