

FROM THE OFFICE OF

CHARLES O. GEORGI COMPANY

2215 West County Road B

Saint Paul, Minnesota 55113

REGISTERED CIVIL ENGINEER AND LAND SURVEYOR

Certificate of Survey

I Hereby Certify that this plat shows a survey made by me of the property described on this plat, and that the corners are correctly placed as shown, and that all locations have been correctly shown.

Project No. Minn A-1-7
Parcel No. 59 M
Area 4,244 sq. ft. mol.

Surveyed For Housing Authority

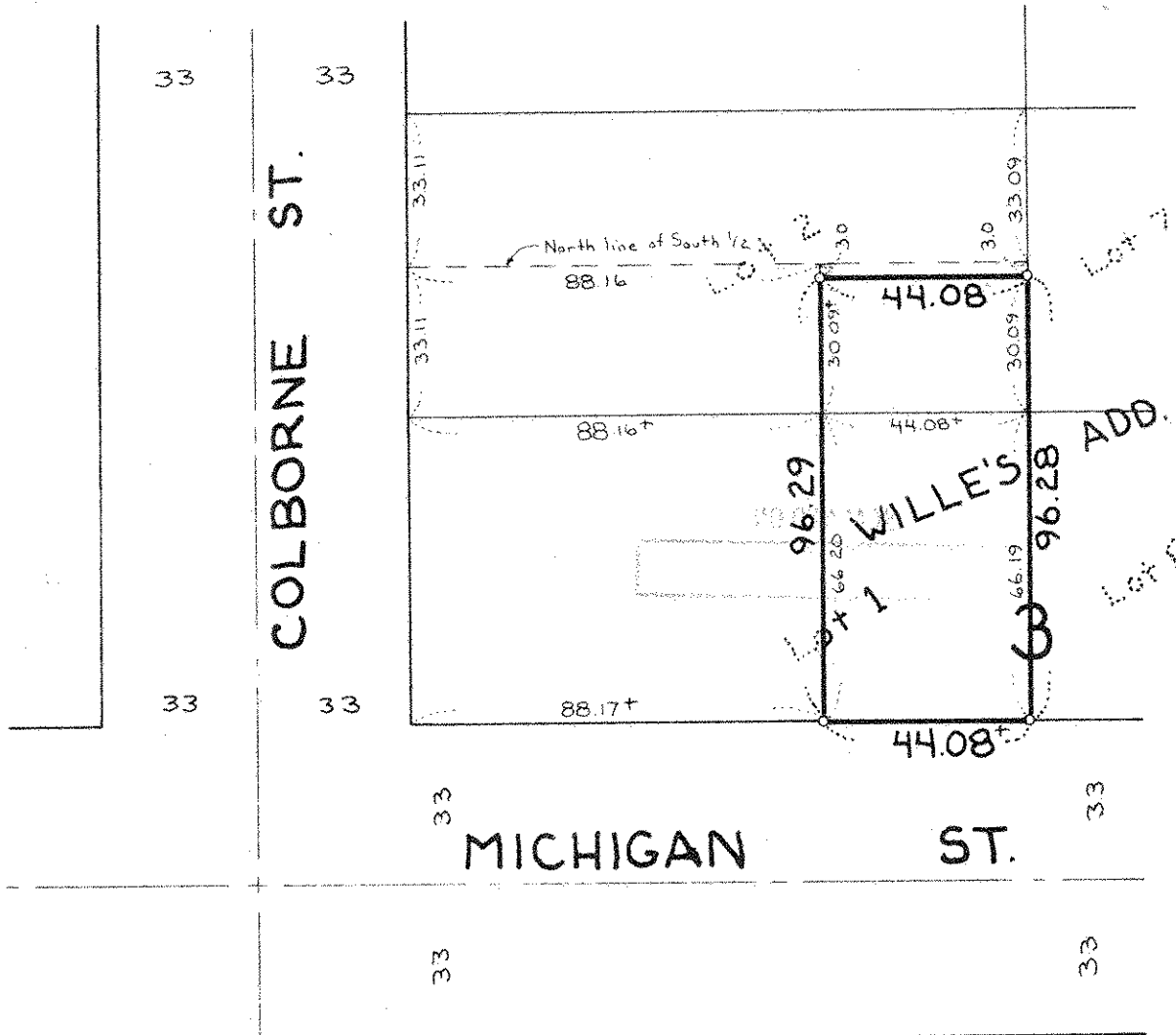
Date Feb 1975

Scale 1" = 40'

By Charles O. Georgi
REGISTERED LAND SURVEYOR

Description:

The East 1/3 of Lot 1 and the East 1/3 of the South 1/2 of Lot 2 except the North 3 feet, Block 3, Wille's Addition to St. Paul, Ramsey County, Minnesota



o Denotes Iron Pipe Monument