

4" Bituminous Macadam Surfacing

STREET

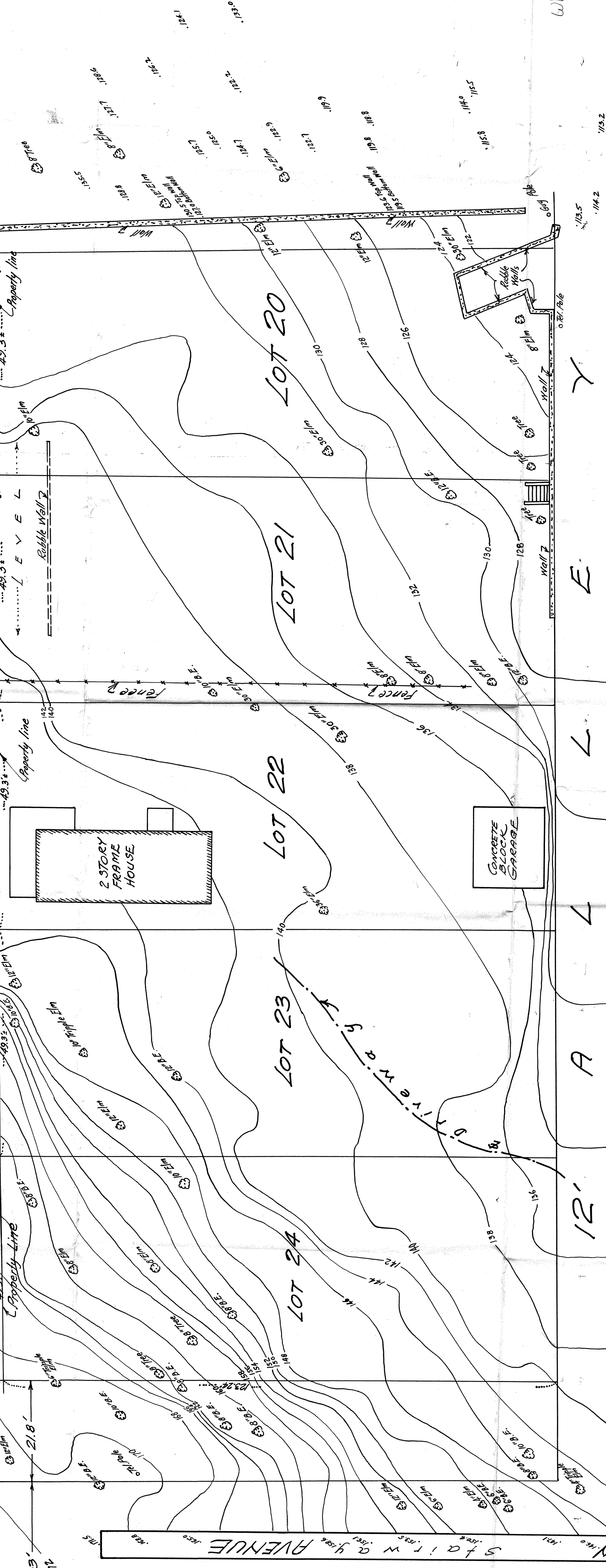
4" Bituminous MacAdams Surfacing

7" Reinforced Concrete Pavement

R A M S E Y

4" Bituminous MacAdam Surfacing

5" Monolithic Concrete Sidewalk



TOPOGRAPHICAL MAP

LOTS 20-21-22-23 AND 24, BLOCK 2, WHITACE BRISHINE AND MULLIN'S SUBDIVISION OF LOTS 1 AND 2 OF LEECH'S ADDITION OF OUTLOTS.

JULY 31, 1962

SCALE: 1" = 10 FEET

J. J. WALKER  
REGISTERED SURVEYOR  
208 SURREY AVE  
ST. PAUL, G. MINN.  
TEL. PR 6-0640

BENCH MARK:  
The point NE Corner of Western Avenue  
and Ramsey Street  
Elevation 170.90  
City of St. Paul, Dept. of Public Works Datum.