

NO 22, 30, 27

FROM THE OFFICE OF

CHARLES O. GEORGI COMPANY

2215 West County Road B Saint Paul 13, Minnesota
REGISTERED CIVIL ENGINEER AND LAND SURVEYOR

Certificate of Survey

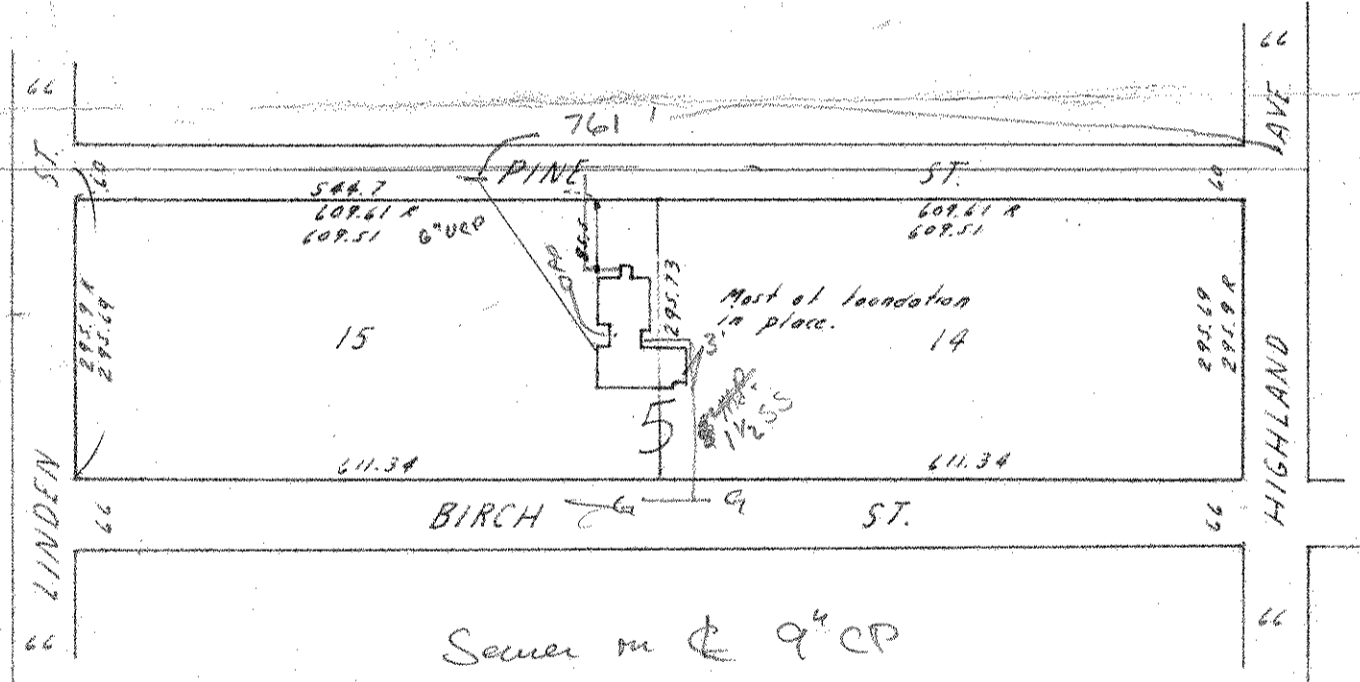
I Hereby Certify that this plat shows a survey made by me of the property described on this plat, and that the corners are correctly placed as shown, and that all locations have been correctly shown.

Surveyed For *White Bear Lake Methodist Church*
Date *August 1965*
Scale *1" = 200'*

By *Charles O. Georgi*
REGISTERED LAND SURVEYOR

Description:

*Lot 14 and 15
Block 5
Rearrangement of White Bear Park*



Notes:
*Boundary lines set July 1964 as shown on Site Map.
22' N 3" Gas CS
Sewer on E 9" CP
6" Water 10' N*

SCANNED ON

