

# CHARLES O. GEORGI COMPANY

2215 West County Road B

Saint Paul 13, Minnesota

REGISTERED CIVIL ENGINEER AND LAND SURVEYOR

## Certificate of Survey

I Hereby Certify that this plat shows a survey made by me of the property described on this plat, and that the corners are correctly placed as shown, and that all locations have been correctly shown.

Surveyed For *T. Guggemos*

Date *June 1962*

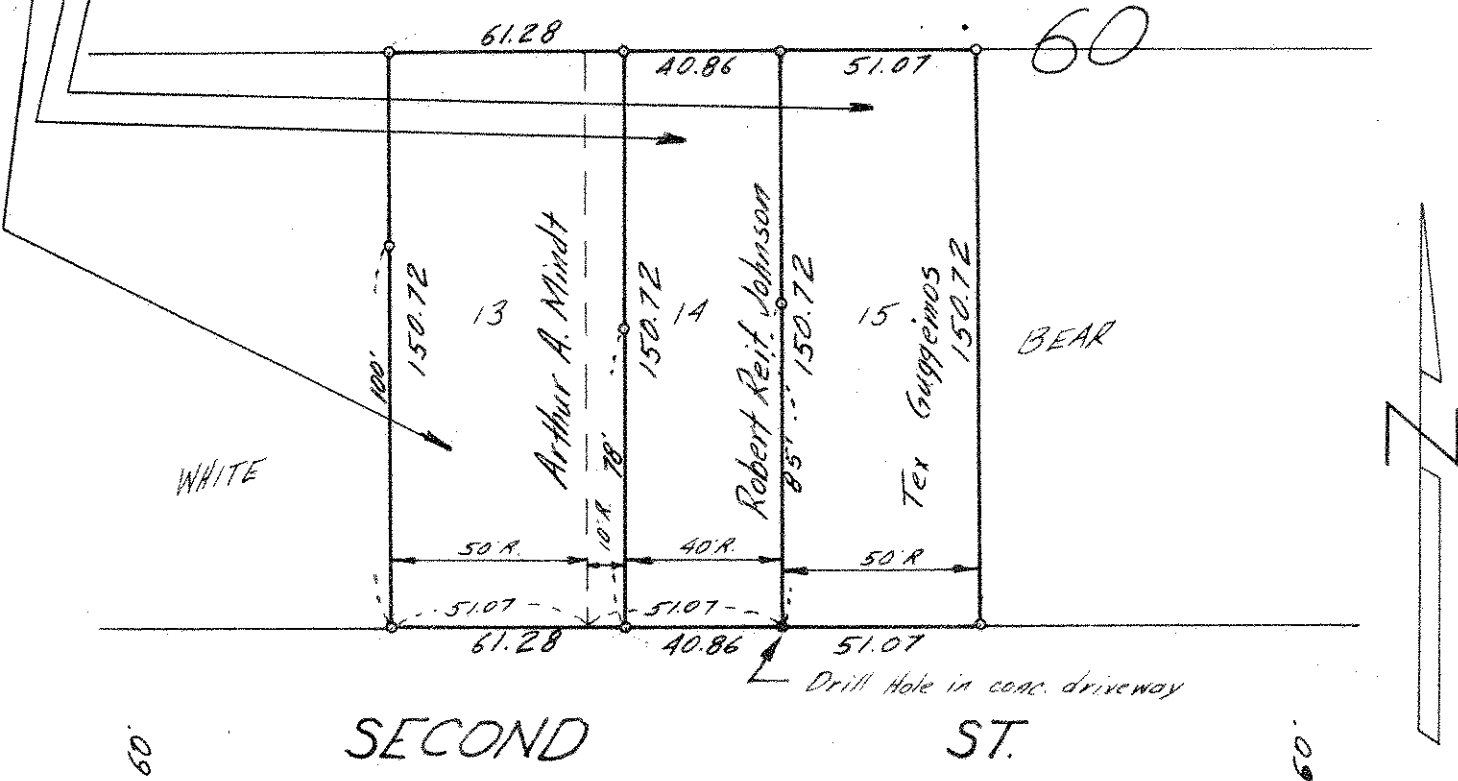
Scale *1" = 50'*

By *Charles O. Georgi*  
REGISTERED LAND SURVEYOR

description: Lot 13 and the West 10 feet of Lot 14 -  
The East 40 feet of Lot 14 -  
Lot 15 - T. Guggemos  
Block 60  
White Bear

NOTE:

Measurements shown other than record plat distances, are prorated measurements which are in accord with line of occupancy and monuments found in this block.



o Denotes Iron Monument  
R. Denotes Record Plat Distance

SCANNED ON

