

14-30-72

LOTS 2, 3, 6, 7, & 8 BLOCK 43.

WHITE BEAR,  
RAMSEY COUNTY, MINN.

JOHN B. IRVINE, SURVEYOR.

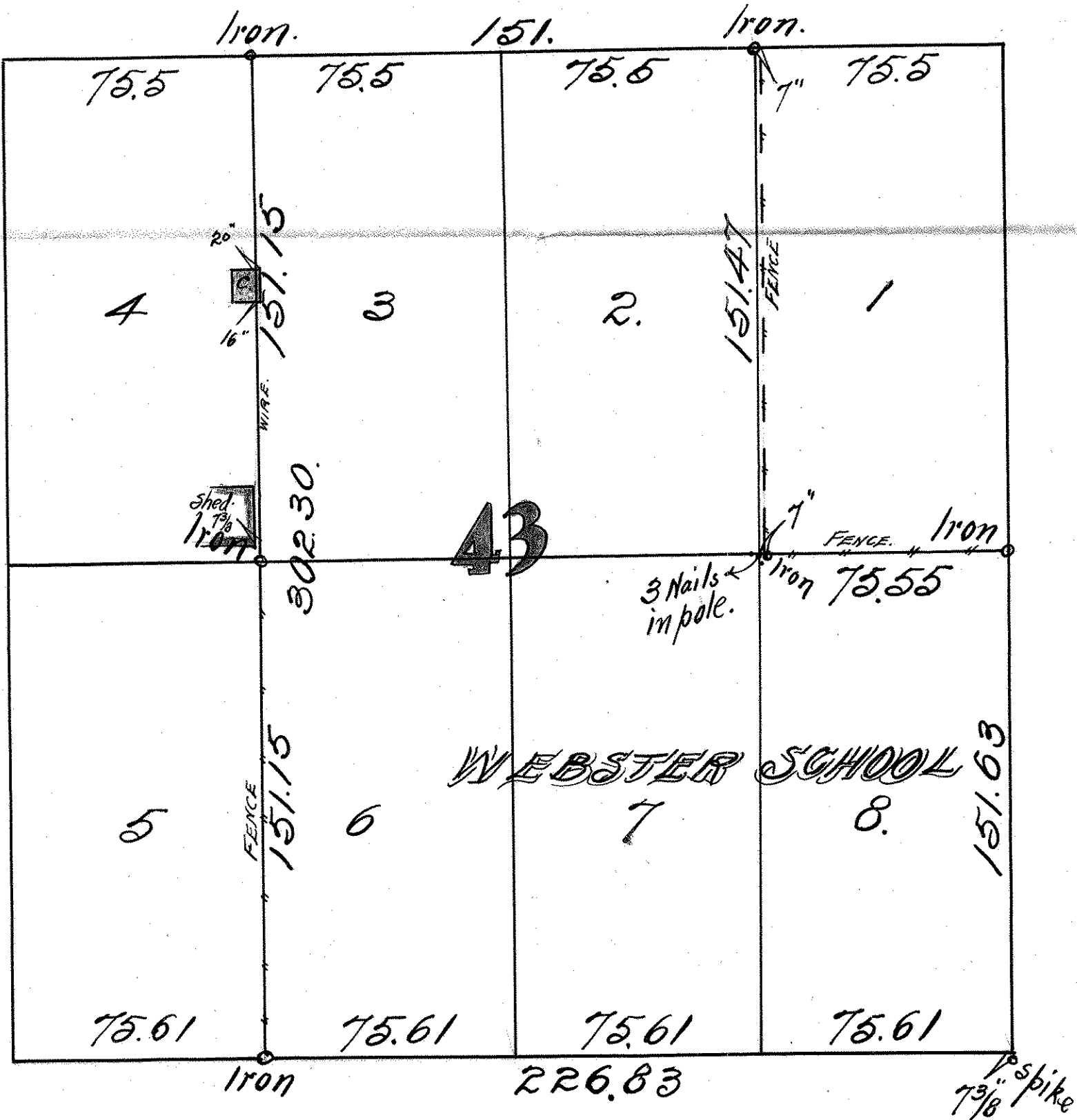
408 GLOBE BLDG.

ST. PAUL, MINN.

AUG. 13-1914

Scale 40 ft. per inch.

SIXTH ST.



FIFTH ST.

Surveyed for the Independent School District of White Bear

ST.

COOK

ST.

STEWART