

AVE.

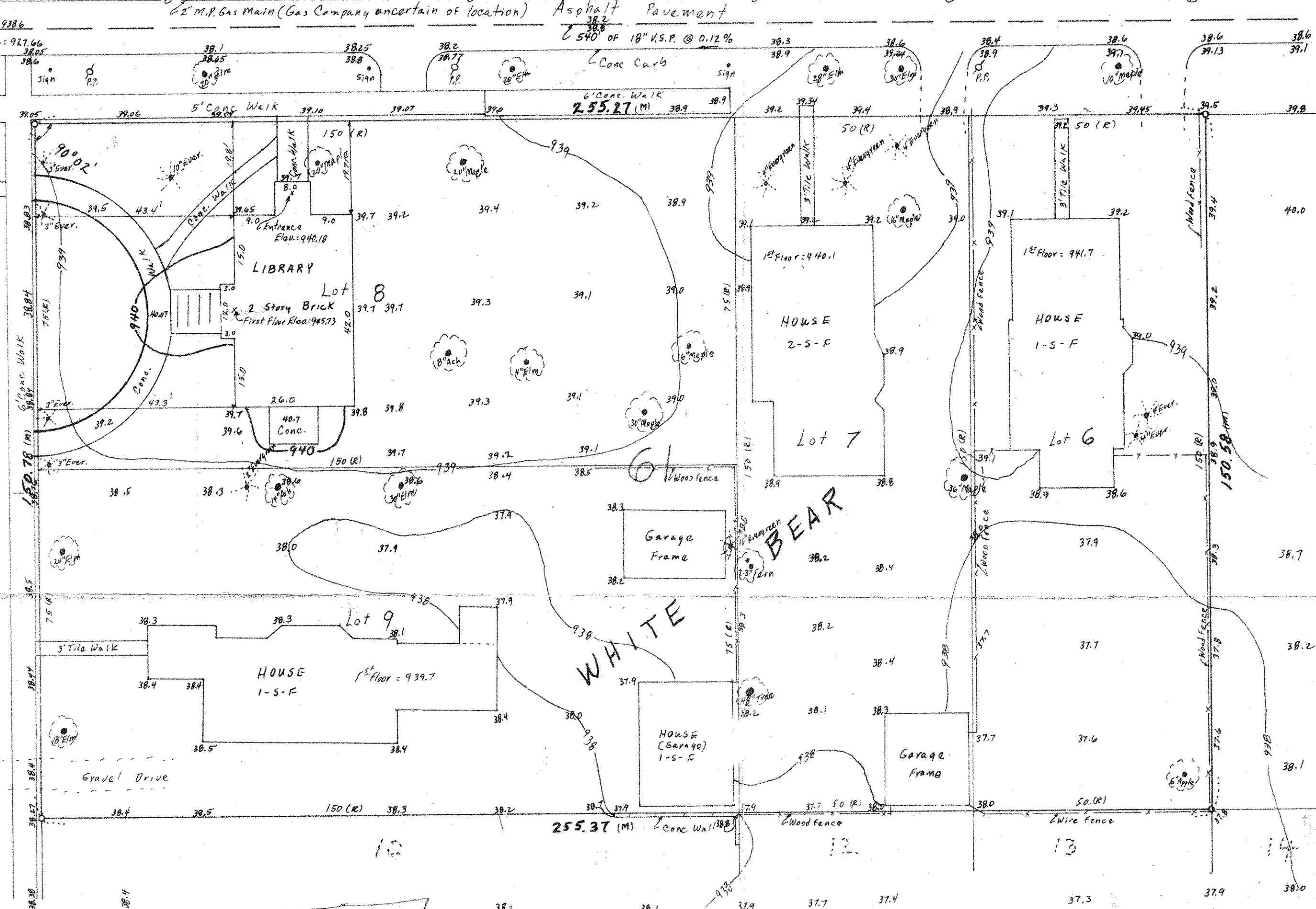
CLARK



o Denotes Iron Monument

SECOND STREET

STREET



DESCRIPTION:
Church
Lots 6, 7, 8, and 9, Block 61, White Bear
Ramsey County, Minnesota

Steve Peterson
Bridgman & P.S. 500
633-7112

1. get elev. for Church
2. Entry Elev.
3. Allegan E. side of Church. H & S. Split elev. from N. end to 1st St. or elev. gutter line.

NOTES:
 (R) Denotes Record Plat distances
 (M) Denotes Prorated measurement (Excess in block)
 Bashes and Hedges not shown
 P.P. Denotes Power Pole
 H.H. Denotes Fire Hydrant
 (T) Denotes Trees
 (E) Denotes Evergreen Trees
 Elevations are U.S.G.S and City Datum
 Elev. 37.9 Denotes Elevation 937.9
 B.M.: 941.47 Top Hydrant SE. Corner Clark & 2nd St.
 Utilities as per Engineer's Records & to accuracy of same.
 Contact Utility Companies Before excavation.

I Heraby Certify that this map shows a survey done by me, or under my direct supervision, of the property described hereon, and that the corners are correctly placed as shown, and that all locations and elevations have been correctly shown.

REGISTERED LAND SURVEYOR

BOUNDARY AND TOPOGRAPHY MAP
LIBRARY SITE

CITY OF WHITE BEAR LAKE
RAMSEY COUNTY, MINN.

SCALE: 1"=20'

CHARLES O. GEORGI COMPANY
CIVIL ENGINEERING AND LAND SURVEYING
2315 W. COUNTY ROAD B
ST. PAUL, MINN. 55115

SCANNED ON

July 1972