

BANISTER ENGINEERING CO.

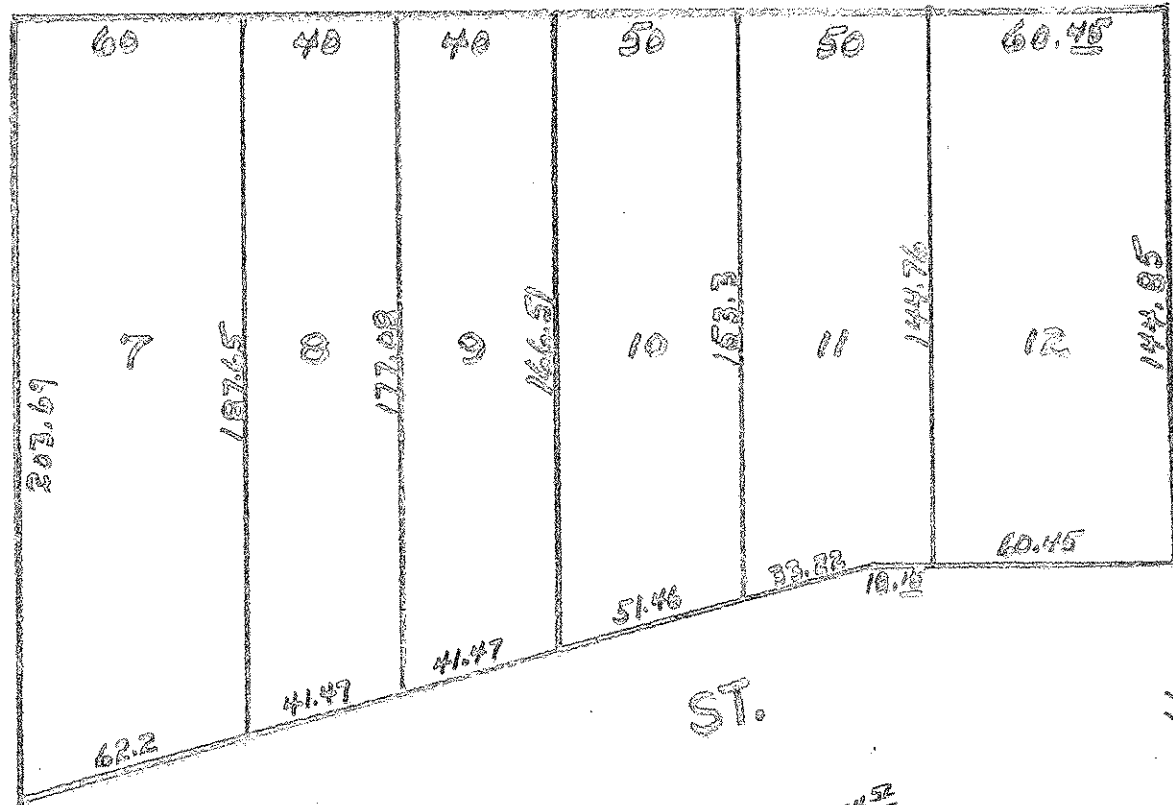
ST. PAUL
MINNESOTA

July - 35

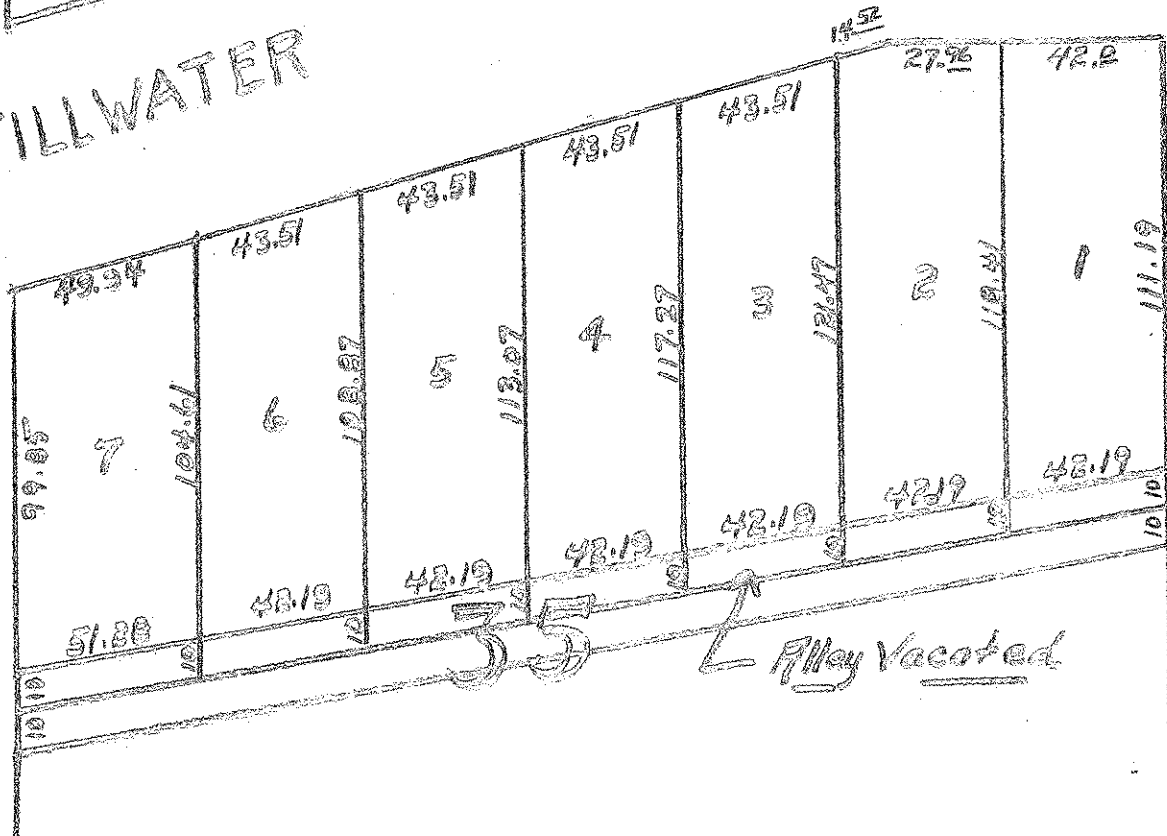
HUDSON,
WISCONSIN

SHOWING SO. 1/2 of BLOCK 26 and No 1/2 of
BLOCK 35. WHITE BEAR BEACH ADD.
RAMSEY Co. MINNESOTA.

26



STILLWATER



GRAND AV.

PORTLAND AV.