

LOT 4

SCHEFFER & MARTIN'S REAR BLK 16,
OF
WOODBURY & CASE'S ADD.

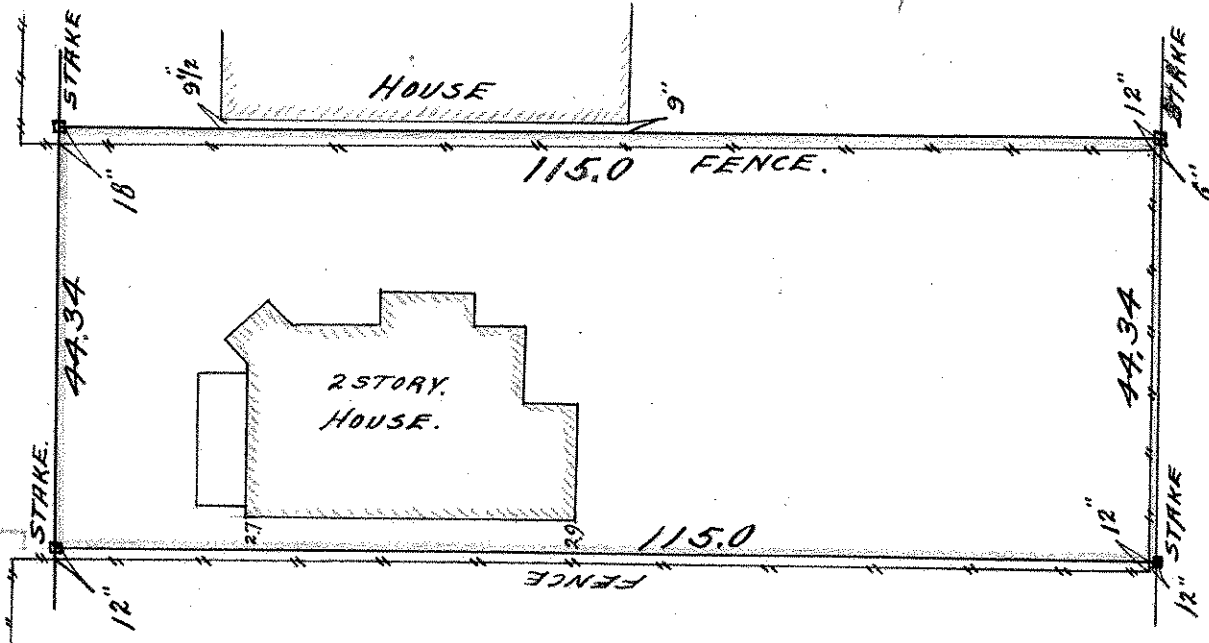
JOHN B. IRVINE, SURVEYOR,
ROOM 508 GLOBE BLDG.,
ST PAUL MINN.

SCALE 1 IN. = 20 FT.

JULY 24 05.

N

HARVARD ST.



SCANNED ON

JULY 1905